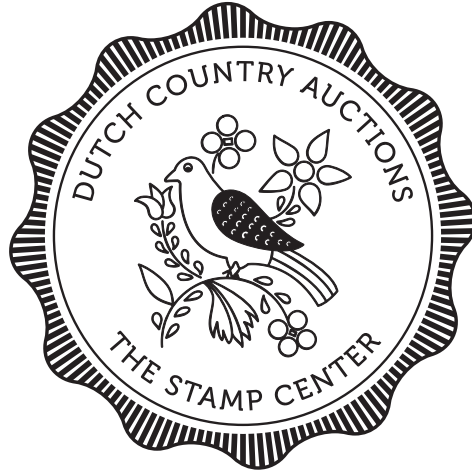


DUTCH COUNTRY AUCTIONS

The Stamp Center



Presents

COIN & CURRENCY SALE #47

Now In Our 47th Year

Thursday, June 11, 2026 - 1 pm ET

302-478-8740

www.dutchcountryauctions.com

4115 Concord Pike • Wilmington, DE 19803

HOURS (ET)

Monday - Friday: 9:30 am - 4:30 pm

Please note: We are currently open by appointment only during our regular business hours. Please call or email to schedule an appointment.

CONDITIONS OF SALE

Bidding

1. The placing of a bid will constitute acceptance of the conditions of sale.
2. All bids are per lot as numbered in the catalog. The right is reserved to withdraw any lot or lots and to group two or more lots.
3. Lots are sold to the highest bidder at one advance over the second highest bid. The auctioneer shall regulate the bidding and in the event of any dispute the auctioneer's decision shall be final.
4. The auctioneer shall not be liable for errors and omissions in executing instructions to bid.
5. Unlimited bids and bids believed not to be made in good faith will be respectfully declined.
6. Minimum bid on any lot is \$50.00.
7. All lots will be sold at the price for which they are knocked down by the auctioneer, plus a commission of 15%.

Payment of Purchases

8. Successful bidders will be notified of lots purchased and must remit before lots are delivered. Persons who are known to us may, at our option, have purchases forwarded for immediate payment.
9. Terms are immediate payment in U.S. funds on receipt of the invoice. Payment by credit card will be subject to a 2% service charge.
10. The mode of shipment shall be at our option unless we are given specific instructions. A minimum charge of \$1.50 will be made in addition to postage, insurance, and handling.
11. Successful bidders agree to pay for lots as specified above and no credit is extended. For overdue accounts a late charge of 5% per month (minimum \$30.00) will be charged. Accounts are considered overdue after (30) days.

Quality

12. Any lot, the description of which is incorrect, is returnable within ten (10) days of receipt and must be received within four weeks from the date of the auction. All disputed lots must be returned intact in the condition received. The following lots may not be returned without prior approval: lots from buyers who have had the opportunity to examine them before the sale; lots described as having defects or faults may not be returned because of faults; and, lots in which the buyer has bid more than double our estimate. No illustrated lot may be returned because of centering, margins, or other factors shown in the illustrations.

Authenticity

13. All lots are sold as genuine, but should any lot be proved otherwise by written opinion of any responsible authority acceptable to us, immediate refund of the full purchase price will be made, provided we are notified in writing within 14 days from date of sale that an opinion is being sought. If claim is not made within this period, no lots are returnable for any reason at any time. We will not be responsible for any charges incurred by the buyer for expertization fees and costs unless the opinion states the item is not genuine, in which case we will pay actual costs up to a maximum of \$100.00. In the event an item is proved "not as described" it is returnable for a full refund. Any lot which has a certificate dated within the last five years is sold in accordance with the certificate and is not returnable for any reason including an opinion obtained in a new certificate after the sale. While we occasionally suggest what grade a coin may receive if certified, we do guarantee that grade (or any other grade) if a coin is submitted for certification.

Russell W. Eggert
Owner
Licensed & Bonded Auctioneer
Member



"CUSTOMER SATISFACTION IS OUR PLEDGE"

Dutch Country Auctions

COIN & CURRENCY SALE #47

INDEX OF SALE

IMPORTANT NOTICE

15% buyers commission is added to the hammer price of all lots.

Thursday, June 11, 2026 1:00 PM

LOTS

1-149	U.S. Coins
150-155	U.S. Gold
156	U.S. Types
157	Commemorative Arts Gold Medals
158	Classic Commemoratives
159-184	Modern Commemoratives
185-211	Modern American Eagles
212-224	Silver Coins
225-231	Silver & Gold Bars/Ingots/Rounds/Medals
232-270	U.S. Mint Sets & Proof Sets
271	Hard Times/Civil War Era
272-288	Medals & Tokens
289-293	Miscellaneous
294-323	U.S. Currency
324-336	U.S. Coin Accum
337-339	Ancient Coins
340-389	Worldwide Coins
390-403	Worldwide Currency
404-412	Numismatic Reference & Supplies

INSPECTION

Inspection of Sale #47 will begin on **Tuesday, May 26, 2026** by **APPOINTMENT ONLY**. Please call us at 302-478-8740 or email at auctions@dutchcountryauctions.com to schedule an appointment.

AUCTION DAY

Doors open at 12:30 PM on auction days. We will continue to offer live internet bidding via Stamp Auction Network.

BIDDING INCREMENTS

Bids	Increment
up to \$100	\$2
\$100 up to \$200	\$5
\$200 up to \$500	\$10
\$500 up to \$1,000	\$25
\$1,000 up to \$3,000	\$50
\$3,000 up to \$7,000	\$100
\$7,000 up to \$10,000	\$200
\$10,000 up to \$15,000	\$500
\$15,000+	\$1,000

LOT	U.S. COINS		VALUE	
Colonial Coins				
1	1783 George Washington "Unity States" Copper, VF details, BN. Date appears to have been acid-treated in the past otherwise beautiful original.	EST	225-325	SE
2	1787 Connecticut Copper "Mailed Bust Facing Left". F details. Large scratch or possible lamination on top of obverse otherwise nice brown original.	EST	225-275	SE
Large Cents				
3	(13) Large Cents incl 1818, 1819 (2), 1822, 1826, 1835, 1838 (2), 1839, 1843 (2), 1844, & 1854. G to F.	EST	150-180	BAG
Indian Cents				
4	(6) nearly complete sets 1888 // 1909. Each set missing only 1908-S and 1909-S. (132) coins total housed in Whitman folders. Avg circulation.	EST	120-140	BAG
5	(82) Indian Head Cents 1880 // 1907 IDed in 2x2s. G to VF	EST	120-160	B
6	(200) Indian Head Cents 1883 // 1909. Neatly organized & housed in a " Day/Week Medicine Pill Box". Average circulation.	EST	200-300	B
7	(200+) 1857 // 1909. Avg circ.	EST	140-200	BAG
8	(500) Indian Head Cents 1900 & later. Avg circ.	EST	450-500	B
Lincoln Cents				
9	(325+) Lincoln Cents IDed in 2x2 & Whitman folders. Mostly common dates 1909 // 1960. G to Unc w/ dup.	EST	40-50	B
10	(450+) Lincoln Cents 1909 // 1974-S housed in (8) Whitman albums #9405 & 9406. All common dates. Avg circ.	EST	40-50	L
11	(550+) Lincoln Cents 1909 // 1974-S housed in (9) Littleton, Harris, Merit & Whitman folders. All common dates. Early dates circ but many UNC coins post-1930.	EST	50-70	B
12	(675+) Lincoln Cents 1909 // 1974-S housed in (16) Whitman, Littleton & Presidents Coin Co folders. All common dates. Avg circ.	EST	50-70	B
13	(700+) Wheat Cents 1909 VDB // 1945-S housed in (13) Whitman, Harris & Presidents Coin Co folders. All common dates. AVG circ.	EST	75-100	B
14	(1000) Steel Cents 1943 P, D & S, average circ.	EST	80-100	B
15	(1000) Housed in (20) bank rolls incl 1959-D (5), 1960-P, 1960-D (2), 1961-D (2), 1962-P (2), 1964-P (4), 1964-D, 2009-P (log splitter) (2) & 2009-D (log splitter). BU.	EST	50-60	B
16	(1000) Steel Cents housed in (20) rolls by mint mark incl 1943-P (14), 1943-D (4) & 1943-S (2). Avg circ.	EST	100-120	B
17	(1000+) Lincoln Cents 1911 // 1990s, primarily Wheats IDed & housed in (12) 2x2 boxes and (8) Whitman folders.	EST	85-100	L
18	(1100) Lincoln Memorial Cents separated by year & housed in coin tubes. Includes 1966-1967, 1971-2007. Almost all coins appear AU/UNC.	EST	40-50	B
19	(1275+) UNC Wheat Cents housed in coin tubes incl 1954-P (645) in (13) tubes, 1955-P (391) in (8) tubes, 1955-S (150) in (3) tubes & 1956-P (100) in (2) tubes. Entire collection Greysheets @ \$650	EST	650-750	B
20	(1325+) Lincoln Wheat Cents, avg circ.	EST	90-115	B
21	(2800+) Lincoln Cents 1909 // 2010s primarily Wheats (1900+) IDed & housed in (3) 2x2 boxes & (46) mostly Whitman folders. Wheat cents are avg circ. Memorial cents (900+) are better grades including many UNCs.	EST	180-200	L
22	(3600) Wheat Cents 1950 // 1958-D IDed & separated by year & mint mark, housed in (72) coin tubes. Better than average circ.	EST	200-300	L
Two Cent Pieces				
23	(9) 2 Cent Pieces including (3) 1866, (4) 1868 & (2) 1869. AG - VG.	EST	180-225	SE
Buffalo Nickels				
24	(48) Partial set of circulated Buffalo Nickels 1913 // 1938-D housed in a Whitman album #9408. Mostly full date & many higher grade.	EST	50-60	BAG
25	(375+) Buffalo Nickels housed in rolls & tubes, almost all 1920s & 1930s. Avg circulation.	EST	350-450	B
26	(450+) Circulated Buffalo Nickels 1913 // 1938-D in (17) Whitman folders. G to AU.	EST	400-500	B
Jefferson Nickels				
27	(99) Jefferson Nickels 1938 // 1981 housed in (2) Whitman albums #9409 & 9410. Includes (11) War nickels. 1964 & earlier coins are mostly circulated. 1965 & later are nearly all UNC. Missing only 1968, 1978-D, 1980 & 1981-D. ASW approx. 0.61 ozt.	EST	84-100	BAG
28	(113) In (2) partial sets incl 1938 // 1963 in LOC album (VG early years to UNC later years) & 1938 // 1965 In Whitman album #9410 (VG early years to UNC later years).	EST	140-160	LE
29	(3) Complete sets (190 coins total) including (2) 1938 to 1961-D sets & (1) 1938 to 1958-D set all housed in (3) Whitman folders #9009. Includes (33) Silver War nickels. Avg circulation. ASW approx. 1.85 ozt.	EST	170-220	BAG
30	(195) Jefferson Nickels 1938 // 1961-D housed in (4) Whitman folders #9009. Includes (33) War nickels. Avg circulation. ASW approx. 1.85 ozt.	EST	170-200	BAG

LOT	U.S. COINS		VALUE	
31	(225+) 1939 // 2023. Early dates circulated to later dates mostly AU/UNC. Housed in (5) Merit, Whitman & Harris folders. ASW approx 0.50 ozt.	EST	70-100	B
32	(425+) Jefferson Nickels mostly (300+) 1938 // 1961 housed in (9) Whitman folders. Includes (28) War nickels. The folders are incomplete & the coins are circulated. Additional Whitman folders (2) contain the remainder of the coins (120) which are UNC & are from the 1960s-80s. ASW approx. 1.57 ozt	EST	170-220	B
33	(1400) Jefferson Nickels housed in coin tubes incl 1954-P (80) in (2) tubes, 1956-P (400) in (10) tubes, 1957-P (120) in (3) tubes, 1958-P (80) in (2) tubes, 1958-D (80) in (2) tubes, 1959-P (440) in (11) tubes, 1960-P (40) in a tube & 1960-D (160) in (4) tubes. The entire collection Greysheets @ \$425.	EST	425-525	B
5c Groups / Collections				
34	(190+) Collection of nickels IDed in 2x2s or Whitman folders incl approx Liberty (25) , Buffalo (35) & (134) pre-1959 Jefferson nickels (30) of which are silver (ASW approx.1.68 ozt)	EST	100-150	B
35	(123) Nearly complete nickel collection 1934 // 1957-D, missing only the 1950-D. Incl Buffalo (12) & Jefferson (111) of which (22) are War nickels. A handful (5) are later dates 1959 // 1962. Coins are housed in old National Coin album pages. Approx one-half of the Jefferson nickels are UNC & the remainder are circ. Buffalo nickels are circ. ASW approx. 1.23 ozt.	EST	125-150	LE
Bust Dimes				
36	1801 Draped Bust dime ANACS Fair 2. Greysheet AG2 @ \$900.	EST	900-1,100	SE
37	1805 Draped Bust dime "4 Berries". Condition Fine.	EST	1,200-1,500	SE
38	(4) Capped Bust dimes incl 1825, 1827 (Pointed Top 1), 1833 (Last 3 High) & 1835. AG condition.	EST	125-150	SE
Mercury Dimes				
39	1919-D XF	EST	60-80	SE
40	1925-S XF	EST	120-150	SE
41	1944-S Mercury Dime NGC MS66. Although not noted on the the slab this coin has "Full Bands".	EST	60-80	SE
42	(75) Mercury Dimes in a nearly complete set 1916 // 1945-D including 1921 & 1921-D. Missing only 1916-D & 1926-S. Avg Circ. Housed in Whitman folder #9014. ASW approx. 5.42 ozt.	EST	370-450	SE
Roosevelt Dimes				
43	(50) 1955-S BU. ASW approx. 3.61 ozt.	EST	270-350	SE
44	(25) 1963-D BU. ASW approx.1.80 ozt.	EST	125-150	SE
45	(35) 1964 BU dimes. ASW approx. 2.53 ozt.	EST	175-200	SE
46	(4) 2017-S Enhanced Uncirculated incl (2) FDOI PCGS SP70FB, (1) FDOI PCGS SP69FB & (1) NGC SP70.	EST	100-125	BAG
47	(19) Year-Date Collection 1945 // 1964. BU. ASW approx. 1.37 ozt. Note: Accompanied by original purchase receipt from 1981 for \$135	EST	100-150	BAG
48	(48) Complete set of circulated 1946 // 1964-D. ASW approx. 3.47 ozt.	EST	300-350	BAG
49	(60) Complete set of circulated 1946 // 1967 with (9) additional. \$5.70 FV of silver dimes. ASW approx. 4.12 ozt.	EST	370-400	BAG
50	(3) Complete sets (144 coins) 1946 // 1964-D. Avg circ. Housed in (2) Whitman folders #9029 & (1) Harris folder # 08:35. ASW approx. 10.41 ozt.	EST	725-800	LE
51	(162) in (5) partial sets 1946 // 1964. Avg circ. Housed in (4) Whitman #9029 & (1) Popular folder.	EST	850-950	B
Washington Quarters				
52	(34) 1932 F-XF.	EST	500-600	SE
53	(40) 1964-D BU. ASW approx. 7.23 ozt.	EST	550-750	SE
54	(40) 1964-D BU in bank roll. ASW approx. 7.23 ozt.	EST	550-750	SE
55	(40) 1964-P BU. ASW approx. 7.23 ozt.	EST	550-750	SE
56	(40) 1970-S Proofs clad.	EST	100-140	BAG
57	(10) in a complete set 1960 // 1964-D. Better grade circulated coins. Housed in Whitman folder #9040. ASW approx. 1.80 ozt.	EST	125-150	SE
58	(35) in a nearly complete set 1932 // 1945-S, missing only 1932-D & 1932-S. Avg circ. Housed in Whitman folder #9018. ASW approx. 6.32 ozt.	EST	450-500	SE
59	(36) in a complete set 1946 // 1959-D. Avg circ with several nicer coins. Housed in Whitman folder #9031. ASW approx. 6.51 ozt.	EST	450-500	SE
60	(58) in a nearly complete set 1932 // 1953-S, missing only 1932-D & 1932-S. Avg circ. Housed in Harris Album # 8:275. ASW approx. 10.48 ozt.	EST	750-850	BAG
61	(90) 1960 // 1980 housed in (3) Whitman folders #9040. Includes (30) silver quarters. Condition AU/UNC. ASW approx. 5.42 ozt	EST	500-650	BAG
62	(3) Nearly complete sets 1932 // 1959-D, missing only 1932-S & 1932-D. Housed in Whitman folders #9031 & 9018.Total coins = (213). Avg circ. ASW approx. 38.52 ozt.	EST	2,700-3,000	L
63	(6) Rolls BU (240) coins including 1977, 1987, 1990, 1994 & (2) 1999 (PA).	EST	80-90	BAG

LOT	U.S. COINS		VALUE	
64	(240) 1776-1976 Bicentennial Quarters. AU/UNC. FV=\$60. Bonus: (18) 1776-1976 Kennedy Half-dollars FV=\$9.	EST	60-70	B
65	(32) Silver Washington Quarters years 1932 // 1964 missing the year 1933 are included in the Postal Commemorative Society George Washington Silver Quarter Collection. Each quarter is accompanied by a different unused US Stamp honoring G.W. on a historical panel summarizing a significant moment in his life or presidency. Average circ. ASW approx. 5.78 oz.	EST	500-550	L
State Quarters				
66	(308) State and NP quarters housed in complete set Postal Commemorative Society "Statehood Quarters Collection" Vol. I & II, incomplete set PCS Stamps and Coins "US State Quarters" Series II, and owner IDed in 2x2s. FV approx. \$77, Bonus: (35) Jefferson nickels 1990 // 2018 IDed & housed in 2x2s.	EST	75-100	L
67	(490+) 1980 // 2024. Mostly State quarters but also contains NP & Women's Quarters. Housed in (13) Harris, Littleton & Whitman folders. Most AU/UNC. Bonus: (20) 1976 Bicentennial quarters.	EST	125-150	B
68	(700) Mostly State Quarters (FV\$175). Incl (80) 1976 Bicentennial quarters & (55) colorized state quarters. All coins Uncirculated.	EST	170-225	L
69	(55) State/NP Quarter Proof sets incl 1999 (6), 2000, 2002, 2003 (4), 2004 (6), 2005 (9), 2006 (7), 2007 (6), 2008 (8), 2009 (3), 2012 (2), 2013 & 2019. All OGP. April Greysheet \$307.25	EST	100-300	L
25c Groups / Collections				
70	(117) Different P&D BU Washington quarters 1985-D // 1998-D & State Quarters 1999 // 2007. The entire collection is housed in (2) Eagle binders while each coin is housed in a plastic 2x2. Very attractive presentation.	EST	60-75	L
Bust Halves				
71	1806 Draped Bust Half, VG/VG+	EST	270-330	SE
72	1807 Draped Bust Half, Fine. Very nice eye appeal!	EST	400-450	SE
73	1809 Capped Bust Half, VG+/VF. Some scratches & old cleaning.	EST	140-175	SE
74	1813 Capped Bust Half, F+/VF+. Obverse clashed die.	EST	150-220	SE
75	1821 Capped Bust Half, XF	EST	270-330	SE
76	1822 Capped Bust Half, XF/XF+. Great eye appeal!	EST	300-350	SE
77	1826 Capped Bust Half, VF+ to XF	EST	165-200	SE
78	1827 Capped Bust Half, Square Base 2. VF+ to XF	EST	150-180	SE
79	1828 Capped Bust Half, Square Base 2. VF to VF+	EST	100-125	SE
80	1829 Capped Bust Half, VF - VF+. Nice!	EST	100-150	SE
81	1831 Capped Bust Half, VF	EST	100-125	SE
82	1833 Capped Bust Half, VF++ to XF	EST	125-150	SE
83	1835 Capped Bust Half, F to F+	EST	74-90	SE
84	1836 Capped Bust Half, F	EST	64-80	SE
Seated Halves				
85	(3) Seated half-dollars incl 1853 Arrows & Rays (hole repair), 1854-O with Arrows, and 1858-O. Condition AG/VG.	EST	140-175	SE
Walking Liberty Halves				
86	1945-S NGC MS66+ CAC	EST	250-325	SE
87	(2) both PCGS MS66 including 1942-D & 1947-D.	EST	340-440	SE
88	(3) all PCGS MS66 incl 1942-D, 1946 & 1946-S.	EST	475-625	SE
89	(2) incl 1944-D ANACS MS64 & 1945-D NGC MS66.	EST	180-240	SE
90	(2) both PCGS MS66 incl 1946 & 1946-S.	EST	300-400	SE
91	(30) Diff in a complete set 1937 // 1947-D. Most VG-F w/ some higher grades. Housed in Library of Coins Vol. 20 album. ASW approx. 10.85oz.	EST	750-800	BAG
92	(40) Partial set 1917 // 1947 incl 1938-D (G4/VG8). All housed in two Whitman Albums 9423 & 9424. FV=\$20. ASW approx. 14.46oz.	EST	1,100-1,300	B
Franklin Halves				
93	(35) Diff in complete set 1948-1963-D in Library of Coins album. Mostly better grade Circ to many Unc. ASW approx. 12.65 oz. Worth a look!	EST	950-1,100	B
94	(2) Complete collections (70 coins) 1948 // 1963-D housed in (2) Whitman albums #9425. Avg circ. ASW approx. 25.31 oz.	EST	1,800-2,000	BAG
95	(100) Circ to Unc in Whitman albums & folders & a pocket page. ASW approx. 36.17oz.	EST	2,750-3,000	HWC-B
Kennedy Halves				
96	2014 50th Anniversary 4-Coin Kennedy Half-dollar commemorative set in OGP w/ COA. Includes reverse proof, proof, enhanced uncirculated & uncirculated silver half-dollars. ASW approx. 1.44 oz.	EST	110-135	BAG

LOT	U.S. COINS	EST	VALUE	
97	2014 50th Anniversary 4-Coin Kennedy Half-dollar commemorative set in OGP with COA. Includes reverse proof, proof, enhanced uncirculated & uncirculated silver half-dollars. ASW approx. 1.44 oz.	EST	110-135	BAG
98	(20) 1964-P UNC Kennedy Half-dollars in bank roll. ASW approx. 7.23 oz.	EST	550-750	SE
99	(31) Partial set of UNC 1964 // 1985-D missing only 1979-D, 1981-D, 1982-D & 1983-D and excluding Proof coins. Coins are housed in Whitman folder #9699. ASW approx. 1.45 oz.	EST	110-130	SE
100	(47) 1964-1982 P, D & S mint Uncs & Proofs. Incl Silver - 90% (3), 40% (10). All in Whitman Deluxe album.	EST	300-350	BAG
101	(56) Partial set of UNC 1964 // 1991-D missing only 1981-D & 1988-P & excluding Proof coins. There are (9) diff coins after 1991 ending w/ 2003-D. Coins are housed in (2) Whitman folders #9699 & 9045. ASW approx. 1.49 oz.	EST	140-160	BAG
102	(70) Different UNC P&D half-dollars 1964 // 2001. The entire collection is housed in an Eagle Folder while each coin is housed in Plastic 2x2s. Very attractive presentation.	EST	150-175	L
103	Group (74) Diff 1964 // 1998D incl P, D & S mint Uncs & Proofs. Incl Silver - 90% (2) & 40% (9). All in Whitman Deluxe album.	EST	270-325	BAG
104	Group (170) 1964 // 2014 P, D & S mints Silver Unc & Proofs in (3) Littleton albums. Incl (2) extra: 2015-P & 2015-S clad proof.	EST	1,000-1,200	B
105	(24) 1968-S Proof 40% silver. Each one of these coins has one or more issues incl discoloration, hazing, or toning. ASW=3.5494 oz.	EST	250-275	BAG
106	(49) Proof incl (47) clad with (23) diff dates 1971 // 2005 & (2) 1976 silver.	EST	84-115	B
107	(89) incl (34) UNC housed in plastic capsules, (26) Clad Proofs in plastic 2x2s and (29) additional higher grade circulated coins in 2x2s. (8) diff dates 1971 // 2001. Many dup.	EST	50-100	B
108	(5) Rolls of UNC clad incl 1971, 1971-D, 1974, 1976-D & 1998-D. The 1998-D coins are in the original bank roll. FV=\$50.	EST	64-85	B
109	(10) Rolls (200) coins UNC incl 1971 to 1976-D, 1998 P/D, 2004 P/D, 2005-D, 2006-D, 2013-P/D & 2019-P.	EST	100-150	B
110	(96) in PCS Stamps and Coins "The complete JFK Uncirculated US Half-dollar Collection" which combines the coins with historic stamps and important anniversary postmarks. The set incl. (89) clad coins, (5) 40% silver coins, and (2) 1964 halves. Clad FV approx. \$44.5. ASW approx. 1.46 oz.	EST	150-200	L
Trade Dollars				
111	1877-S VF+	EST	260-300	SE
Morgan Dollars				
112	1881-S INS MS-65DMPL	EST	800-1,000	SE
113	1881-S NGC MS64	EST	100-130	SE
114	(5) housed in a 3rd-party vendor presentation case as the " US Silver Dollar Collectors's Edition". Includes 1878, 1884-O, 1886-O, 1896-O & 1921. F-VF. ASW approx. 3.86 oz.	EST	270-300	SE
115	(6) Diff incl 1878-S, 1880-S, 1885-O, 1887, 1898, 1899-O. XF to Unc most AU+/Unc but all cleaned. Inspect!	EST	330-400	BAG
116	(16) 1878 // 1921, VF/AU. All cleaned or polished.	EST	500-600	LE
117	(20) 1878 // 1901-D. Circ mostly VG-F+. A few faults.	EST	700-800	HWC-ROLL
118	(20) 1878 // 1904-O. AU/AU+. Needs Review!	EST	900-1,000	HWC-ROLL
119	(20) 1878-S // 1921. AU/Unc+. All dipped but still nice eye appeal!	EST	900-1,000	HWC-ROLL
120	(20) 1878-S // 1900-O. XF+/AU+. Some dup. Take a look!	EST	800-900	HWC-ROLL
121	(20) 1878 // 1921. Circ grades. Some dup.	EST	800-900	HWC-ROLL
122	(6) Diff incl 1879-S, 1881-S, 1885-O, 1897, 1898 & 1899-O. Unc details, old cleaning. Great eye appeal & worth a look!	EST	330-400	BAG
123	(20) 1879 // 1921. Circ grades. Some dup.	EST	750-850	HWC-ROLL
124	(5) Diff incl 1880, 1884, 1884-S, 1888-O & 1896. Better Circ grades XF/XF+.	EST	250-300	BAG
125	(13) 1881-S // 1898. Better circ to AU to Au+. Some dup.	EST	600-700	SE
126	(10) 1883 // 1921. Some dup.	EST	350-400	SE
127	(20) 1880 // 1902 AU+/Unc.	EST	950-1,100	HWC-ROLL
128	(3) 1921 P-D-S mint, XF-AU details. Old cleaning. ASW approx. 2.32 oz.	EST	170-200	SE
129	(3) 1921 P-D-S mint. Circ to Unc.	EST	125-175	SE
130	(3) 1921 P-D-S mint. Circ.	EST	125-175	SE
131	(10) 1921 Circ.	EST	350-400	HWC-ROLL
132	(15) 1921-P (5), 1921-D (5) & 1921-S (5). AU/Unc.	EST	700-800	HWC-ROLL
133	(20) 1921 AU/Unc.	EST	900-1,100	HWC-ROLL
134	(23) 1921 P-D-S mints. Circ to Unc. Review!	EST	900-1,000	B
Peace Dollars				
135	1921 in a Capital holder. A bit dull but useful! XF to XF+	EST	150-190	BAG

LOT	U.S. COINS		VALUE	
136	(2) Circ incl 1927-D & 1927-S. Old cleaning. Review!	EST	125-150	BAG
137	(2) 1934-D & 1934-S, Circ. Worth a look!	EST	140-180	BAG
Mixed Morgan & Peace Dollars				
138	\$5 Face holed/damaged Morgans 1880, 1882, 1921 and Peace Dollars 1923, 1935-S. ASW approx. 3.75 ozt.	EST	250-275	BAG
Eisenhower Dollars				
139	(4) Silver Ikes incl (2) Proof 1971-S, (1) 1971-S Unc. & (1) 1973-S Unc. ASW approx. 1.26 ozt.	EST	100-125	SE
140	(4) 1971 UNC Silver Ike Dollars missing outer paper env but still in original OGP plastic sleeves. ASW approx. 1.26 ozt.	EST	110-125	SE
141	(8) 1971 Brown Box Proof Silver Ikes in OGP. ASW approx. 2.52 ozt.	EST	200-250	B
142	(2) Complete sets of Brown Box Proof Silver Ikes 1971-S to 1974-S in OGP. (8) coins total. ASW approx. 2.52 ozt.	EST	200-250	B
143	(11) Coin S-Proof Ike Set PCGS PR69 DCAM incl. 1971-1973 silver, 1973-1974 clad, 1974 silver, 1976 silver, 1976 clad Type 1 & 2, 1977 clad and 1978 clad. Housed in PCGS slab box. Accompanying paperwork indicates the set was originally purchased in 2007 for \$397.50. Greysheet wholesale price is \$345.	EST	350-400	B
144	(15) UNC Silver "Blue" Ikes incl (5) each 1971-S to 1973-S in OGP. ASW approx. 4.74 ozt.	EST	425-475	B
145	(32) In a complete set 1971 to 1978-S housed in Whitman album #9131. Condition UNC & Proof. Includes (10) silver coins. ASW approx. 3.16 ozt.	EST	350-400	BAG
SBA / Sacagawea Dollars				
146	(7) 1999-P Proof SBA dollars in OGP. Greysheet \$18 each.	EST	125-150	B
147	(29) SBA coin sets (82 coins total) including (24) 3-coin (P, D, S) Souvenir Sets (9) 1979, (15) 1980 and (5) uncirculated 1999 P&D sets. All in OGP. The Souvenir sets were only sold at US Mint gift shops.	EST	100-150	B
Presidential Dollars				
148	(29) Presidential Dollar Proof sets incl (14) 2007, (5) 2008, (2) 2009, (2) 2010, (2) 2014, (2) 2015 & (2) 2016. All in OGP. April Greysheet \$214.	EST	115-150	B
\$1 Groups / Collections				
149	(118) Unc modern dollars incl (32) SBA, (20) Presidential & (66) Sac/Native American. A couple of proofs noted. Expect duplicates.	EST	125-200	B
U.S. GOLD				
\$1 Gold				
150	1853 F+	EST	280-300	SE
151	1853 G holed	EST	280-300	SE
152	1873 VF+ altered with loop for chain	EST	340-360	SE
\$2 1/2 Gold				
153	1897 \$2.5 Liberty Gold NGC MS62	EST	700-900	SE
154	1904 \$2.5 Liberty Gold NGC MS63	EST	700-900	SE
155	1929 \$2.5 Indian Gold NGC MS62	EST	700-900	SE
U.S. TYPES				
156	(6) Proof coins incl (2) 2018-S Lincoln Pennies NGC PF 70 RD Reverse Proof Early Release and (4) Jefferson Nickels incl (1) 2018-S NGC PF70 Reverse Proof Early Release, (2) 2020-W ANACS PR69 DCAM & (1) NGC PF69 Ultra Cameo	EST	200-250	BAG
COMMEMORATIVE ARTS GOLD MEDALS				
157	(2) American Arts 1980 gold medallions, 2nd issue Marian Anderson half ounce, designed by Frank Gasparro; original foam package containing (2) medallions. AGW= 1 ozt.	EST	5,000-5,250	SE
CLASSIC COMMEMS				
Classic Commems Silver				
158	1893 Columbian Half-Dollars. All in circulated condition. ASW approx. 1.80 ozt.	EST	125-150	SE
MODERN COMMEMS				
159	(5) Baseball Hall of Fame 2014-P Silver Uncirculated Dollars in OGP with COAs.	EST	400-450	B
160	(5) George Washington 1982-D Uncirculated Silver Half-dollar. All in OGP. ASW=1.80 ozt.	EST	155-175	B
161	(6) George Washington 1982 Silver Commemorative Half-dollars including (2) S Proofs & (4) D Unc coins in OGP. ASW approx. 2.17 ozt. Bonus: (8) 1986 Clad S Proof SOL Commemorative Half-dollars in OGP.	EST	180-200	B
162	(16) 1982-S George Washington Proof Silver Half-dollars. All in OGP. ASW=5.78 ozt.	EST	500-550	B
163	George Washington 1982 silver 50¢ commemoratives in original packaging; UNC (8) and Proof (16); April Greysheet \$810.72, ASW 8.6808 ozt.	EST	700-800	B
164	Thomas Jefferson 1993 Coin & Currency set.	EST	74-90	BAG
165	John F Kennedy 2015 Coin & Chronicles Set, OGP.	EST	100-125	BAG

LOT	MODERN COMMEMS		VALUE	
166	John F Kennedy 2015 Coin & Chronicles set. OGP.	EST	80-100	BAG
167	Lewis and Clark 2004 Coin & Currency set.	EST	80-100	BAG
168	2009 Lincoln Coin & Chronicles 5-Coin Proof Set in OGP with COA. ASW=0.85 ozt.	EST	90-120	BAG
169	2009 Lincoln Coin & Chronicles 5-Coin Proof Set in OGP with COA. ASW=0.85 ozt.	EST	90-120	BAG
170	(9) "Olympic Theme" Modern Commemorative coins incl. (2) 1983-S Proof silver dollars (discus thrower), (2) 1983-P Uncirculated silver dollars (discus thrower), (2) 1988-D Uncirculated silver dollar (Olympic torches), (2) 1992-D Uncirculated silver dollar (baseball), and (1) 1995-P Proof silver dollar (cycling). All in OGP. ASW approx. 6.84 ozt.	EST	675-750	B
171	(2) 1986 Statue of Liberty Commem \$1 & 50¢ in original boxes, OGP.	EST	80-100	BAG
172	(11) Statue of Liberty 1986-P UNC Silver dollars. All in OGP. ASW approx. 8.47 ozt.	EST	900-1,200	B
173	Statue of Liberty 1986 50¢ and \$1 commems in original packaging; UNC \$1 silver (6), UNC 50¢ clad (6) and Proof 50¢ clad (8); March Greysheet \$611.80; ASW 4.6416 ozt.	EST	400-500	B
174	(3) Commemorative Proof Silver Dollars incl 1996 Smithsonian, 1997 Botanical Gardens & 2000 Library of Congress. All in OGP w/ papers. ASW=2.28oz.	EST	175-200	B
175	(4) Modern Commemorative coins incl 1986-S SOL Proof silver dollar & clad half-dollar, 1987-S US Constitution Proof silver dollar & 1993-P T. Jefferson Uncirculated silver dollar. All in OGP. ASW approx. 2.28 ozt.	EST	200-250	B
176	(4) Commemorative Proof Silver Dollars incl 1996 Atlanta Olympic Games (2-coin set of Rowing and High Jump), 1999 Yellowstone & 2000 Leif Ericson. All in OGP w/ papers. ASW=3.04oz.	EST	220-250	B
177	(4) Commemorative Silver Dollars incl 1993 MS Thomas Jefferson and Proof Thomas Jefferson, Proof 1998 RFK & Proof 1999 Dolley Madison. All in OGP. ASW= 3.04oz.	EST	225-250	B
178	(4) Commemorative Silver Proof Dollars incl 2001 US Capitol, 2002 West Point, 2004 Edison & 2005 US Marines. ASW approx. 3.04 ozt	EST	220-250	SE
179	(5) Commemorative Silver Proof Dollars incl. 1983 Olympics, 1986 Liberty, 2002 West Point, 2005 Marines & 2008 Bald Eagle. ASW approx. 3.85 ozt.	EST	275-300	SE
180	(5) Commemorative Silver Proof dollars incl. 2001 US Capitol, 2002 West Point, 2005 US Marines, 2008 Bald Eagle & 2010 Disabled Vet. ASW approx. 3.85 ozt.	EST	270-300	SE
181	(6) S-Proof commemorative half-dollars incl (2) Silver 1982 G. Washington 250th Anniversary, (2) Clad 1986 Statue of Liberty, & (2) Silver 1993 J. Madison Bill of Rights. All housed in individual plastic capsules. Bonus: UNC Clad 1986-D SOL half-dollar.	EST	130-150	BAG
182	(6) Silver commems in souvenir numismatic covers housed in Fleetwood packaging: 1988 Olympics, 1994 Vietnam Veterans, POWs & Military Women, 1995 Special Olympics & 1996 Smithsonian; 4.6416 oz ASW. Bonus: a few other comml packaged items incl (21) Indian Head cents, (18) Buffalo nickels	EST	300-400	B
183	Stash (15) diff commemoratives in small size Mint packaging; Clad UNC 50¢ SOL, Columbus & WWII; Clad Proof 50¢ SOL, Rushmore, WWII; Silver UNC 50¢ GW & Rushmore; Silver Proof 50¢ GW; Silver UNC \$1 SOL, USO, White House, Boy Scouts, Star Spangled Banner; Silver Proof \$1 Moon Landing; a couple w/ missing parts (lid, paper); March Greysheet \$725.71	EST	600-700	B
184	(32) Modern Commemorative Half-dollars incl (9) 1986-D SOL UNC's, (12) 1986-S SOL Proofs, (3) 1986-S SOL Proofs in OGP, (3) 1989-S Congress Proofs, (2) 1991-P WWII Proofs in OGP, 1991-S Mt Rushmore Proof in OGP, 1992-S Olympic Gymnast Proof & 1994-D World CUP Unc in OGP.	EST	110-150	B

MODERN AMERICAN EAGLES

Silver Eagles

185	1986(S) FDOI ASE NGC MS69 "Struck at the SF Mint" with Golden Gate Bridge Label.	EST	100-125	SE
186	2012-(S) (2) NGC MS70 Struck at the SF Mint.	EST	200-250	SE
187	2016 (2) PCGS MS70 ASEs "30th Anniversary" Magnum Opus Legacy Collection.	EST	200-250	SE
188	2019 ASE PCGS MS70 FDOI with Flag label.	EST	100-125	SE
189	2020-W ASE ANACS PR70 DCAM	EST	100-125	SE
190	2020-(W) ASE PCGS MS69 First Strike	EST	100-125	SE
191	2020 (2) ASE PCGS MS70 Magnum Opus Legacy Collection.	EST	200-250	SE
192	2020-W (2) ASE PCGS PR70DCAM Magnum Opus Legacy Collection.	EST	200-250	SE
193	2020-(P) (3) ASE incl (2) PCGS MS69 First Strike - Emergency Issue & (1) PCGS MS 69 Emergency Production - Early Release.	EST	300-375	SE
194	2020 (3) MS70 incl (1) PCGS Biden Label (2) & NGC Trump Label.	EST	200-225	BAG
195	2020-(S) (4) ASE incl (2) NGC MS69 Struck at the SF mint - Emergency Production & (2) PCGS MS70 Struck at SF mint - Emergency Issue FDOI Magnum Opus Legacy Collection.	EST	400-500	SE
196	2020 (4) ANACS Certified ASEs incl 2020 MS70, 2020-(P) MS69 & (2) 2020-(W) MS70.	EST	400-500	B
197	2020-W (4) ASE ANACS SP70	EST	400-500	B
198	2020-S (5) ANACS PR70 DCAM First Strike #1756 // 1760 out of 1995.	EST	500-625	B
199	2021-W T-2 ASE ANACS PF69 DCAM	EST	100-125	SE

LOT	MODERN AMERICAN EAGLES	EST	VALUE	
200	2021 T-2 ASE NGC MS70	EST	100-125	SE
201	2021 (3) T-1 ASE NGC MS70 Early Release.	EST	300-375	SE
202	(4) 2021 ANACS Certified ASEs incl (3) 2021 T-1 MS70 First Strike & (1) 2021 T-2 MS70 First strike.	EST	400-500	B
203	2021 (6) T-1 ASE NGC MS69.	EST	600-750	B
204	(8) Colorized ASE (Liberty and sun on obverse gold-plated) incl. 1987, 1988, 1989, 1999, 2000, 2001, 2002 & 2005 as part of the Postal Commemorative Society Silver Eagle Dollar set. ASW approx 8 ozt.	EST	700-800	B
205	(4) ASEs "Hologram" colorized by the Morgan Mint incl (2) 2000, 2001 & 2003. Housed in felt-lined presentation cases with COAs. ASW = 4.0 ozt.	EST	280-320	B
206	(6) Total "Colorized" coins incl ASE 2001 Armed Forces tribute, 2009 5-Coin set incl colorized, silver hologram, Gold-plated, colorized gold hologram, Platinum plated in wood display box.	EST	400-450	B
207	(10) ASEs in (2) sets 2005 & 2006. Each set contains (5) colorized coins including Hologram, Colorized Hologram, Colorized, 24 Karat Gold Plated, and Golden Hologram. Produced by the Morgan Mint housed in Cherrywood presentation cases with COAs. ASW 10 ozt. Visually striking sets!	EST	700-800	B
Gold Eagles				
208	1988 One-tenth ounce Proof Gold Eagle in OGP.	EST	475-525	SE
209	1989 One-tenth ounce Proof Gold Eagle in OGP.	EST	475-525	SE
210	1990 One-tenth ounce Proof Gold Eagle in OGP.	EST	475-525	SE
211	1997 One-ounce \$50 Gold Eagle.	EST	4,800-5,200	SE
SILVER COINS				
Silver War Nickels				
212	(100) War Nickels 1942 // 1945-S avg circ. (35% silver = 5.62 ozt.)	EST	475-550	BAG
213	(194) War Nickels housed in (5) paper rolls incl (3) rolls marked 1943-S and (2) rolls marked 1945-S. Avg circulation. ASW approx. 10.91 ozt.	EST	900-1,000	B
40% Silver				
214	\$6.50 Face Halves 1967-69, avg circ.	EST	140-175	SE
215	\$25 Face Halves 1967-69 avg circ. ASW 7.395 ozt	EST	525-550	BAG
90% Silver				
216	\$25 Face Roosevelt Dimes avg circ. ASW approx. 18.08	EST	1,300-1,500	BAG
217	\$30 Face Mercury Dimes avg circ. ASW 21.70 ozt.	EST	1,650-1,850	BAG
218	\$30 Face Quarters avg circ. ASW 21.7 ozt.	EST	1,650-1,750	B
219	\$40 Quarters all Washington avg circ. ASW approx. 28.93 ozt	EST	2,100-2,300	BAG
220	\$7.50 Face Halves 1937 // 1964, avg circ.	EST	300-325	SE
221	\$10 Face Halves. Mixture of Walking, Franklin & Kennedy halves (90%). ASW approx. 7.23 ozt.	EST	525-550	BAG
222	\$25 Face Halves all Franklin avg circ. ASW approx. 18.08 ozt	EST	1,300-1,500	BAG
223	\$30 Face Halves all Walking Liberty avg circ. ASW approx. 21.07 ozt.	EST	1,650-1,800	BAG
224	\$5.80 Face Dimes/Quarters, avg-heavy circ.	EST	210-235	BAG
SILVER & GOLD BARS/INGOTS/ROUNDS				
Silver Bars & Rounds				
225	JM Bullion 2 oz. .999 Silver Round	EST	150-175	SE
226	(2) Liberty Indian 1 oz Proof Rounds (.999) housed in (2) presentation cases. Both rounds accompanied by a copy non-silver round. ASW 2oz.	EST	150-175	B
227	(6) Silver .999 20g rounds of Replica US coins from 1776 to 1894-S in plastic slabs. Total ASW 3.85 ozt.	EST	250-300	BAG
228	(4) 1972 Universario World Trade 1 Ounce Silver Rounds. ASW 4ozt. This round is a collectible item w/ a mintage just over 2,000,000 pieces & is part of a series of World Trade rounds minted during the 1970s oil crisis.	EST	300-350	SE
229	(5) .999 Silver Medals / Painted Eagle. Total ASW 4.75 ozt.	EST	350-375	B
230	(20) Liberty Lobby "Andrew Jackson" one-half ounce Silver Rounds. 0.999 fine. ASW 10 ozt	EST	700-750	BAG
231	(10) One-ounce Silver bars. 0.999 fine.	EST	700-750	SE
U.S. MINT SETS & PROOF SETS				
Mint Sets				
232	2008 US Mint Annual Uncirculated Dollar Coin Set which incl (4) P- Presidential dollars, (1) D- Sacagewea dollar, & (1) W-ASE with burnished finish.	EST	75-100	SE
233	(10) Orphan P or D US Mint sets 1960 // 1963 no longer in paper envelopes but still in OGP plastic sleeves. ASW approx.6.13 ozt.	EST	500-600	SE
234	Small Selection of SMS sets in OGP: 1965 (4), 1966, 1967 (5)	EST	120-140	B
235	(36) Mint Sets 1965 // 2007 missing only 1986, 1992, 1994, 1997 & 2003. All in OGP.	EST	300-350	B

LOT	U.S. MINT SETS & PROOF SETS	EST	VALUE	
236	(41) Mint Sets incl SMS 1965, 1966 & 1967, silver 1976, and straight run 1968 // 2009 except for 1982, 1983, 1987, 1995 & 2004. All in OGP.	EST	350-375	B
237	(37) Orphan P or D US Mint sets 1968 // 1974 no longer in paper envs but still in OGP plastic sleeves. FV approx. \$42. Includes (6) 40% Kennedy half-dollars. ASW approx. 0.88 oz.	EST	125-150	B
238	(3) 1976 UNC 3-coin Silver Bicentennial sets incl Ike Dollar, Kennedy Half-dollar & Washington Quarter. These are orphan sets missing the outer paper envelope but still inside the original OGP plastic sleeve. ASW approx. 1.62 oz.	EST	135-150	SE
239	2008 & 2009 Unc sets, (5) of each in original packaging (April Greysheet \$220)	EST	140-180	B
Proof Sets				
240	1987-S Prestige Proof set in OGP with COA.	EST	80-90	BAG
241	1996 Premier Silver Proof Set in OGP with COA.	EST	44-65	SE
242	2011-S Silver Proof (14-coin) set. Each coin is ANACS Certified FDOI #61/187 & graded PR70 DCAM. Coin slabs are housed in attractive Cherrywood presentation case.	EST	150-200	B
243	2013-S Limited Edition Silver Proof (8-coin) set in OGP with COA. ASW approx. 2.33 oz.	EST	160-200	B
244	2017-S Limited Edition Silver Proof (8-coin) set in OGP with COA. ASW approx. 2.33oz.	EST	200-250	B
245	(3) Proof sets in plastic Capital coin cases incl 1956, 1962 & 1964. ASW approx. 1.83 oz.	EST	140-175	LE
246	(8) Proof sets in a complete collection 1956 to 1963. These are orphan sets no longer in original paper envs but still in OGP plastic sleeves. ASW approx. 4.9 oz. Lot being offered at about a 30% discount from Greysheet wholesale price.	EST	425-600	SE
247	(6) Proof sets in a complete collection 1958 to 1963. These are orphan sets no longer in original paper envelopes but still in OGP plastic sleeves. ASW approx. 3.68 oz.	EST	325-400	SE
248	(11) Orphan Proof sets 1958 to 1963 no longer in paper envelopes but still in OGP plastic sleeves. ASW approx. 6.74 oz.	EST	575-650	SE
249	(32) Proof sets in straight run 1968 to 1999 in OGP.	EST	270-325	B
250	(36) Proof sets in a straight run 1968 to 2003 all in OGP.	EST	300-350	L
251	(15) Proof sets in a straight run from 1969 to 1982. There are (2) 1970 sets. All in OGP.	EST	120-135	B
252	(6) 1976 3-coin Silver Proof Bicentennial sets incl Ike Dollar, Kennedy Half-dollar & Washington Quarter. (4) Sets in OGP with COA. (2) Remaining sets in damaged OGP & missing COA. ASW approx. 3.64 oz.	EST	250-300	B
253	(5) Prestige sets incl 1984, 1986, 1990, 1993 & 1994. All in OGP.	EST	500-650	B
254	(6) Silver Proof sets in straight run 1993 to 1998 in OGP.	EST	300-350	B
255	(5) Silver Proof sets in straight run 1999 to 2003 in OGP.	EST	550-600	B
256	(5) Silver Proof sets incl 1999, 2001, 2002, 2003 & 2004 in OGP.	EST	500-550	B
257	(25) State Quarter S-Proof sets including 1999 (5), 2001 (6), 2003 (7), 2004, 2005 (2), 2007 (2), 2008 & 2009. All in OGP.	EST	105-125	B
258	(6) Silver Quarter Proof sets incl 2000, 2004 (2), 2005, 2014 & 2015. These are orphan sets missing the outer cardboard packaging but still contained within the original OGP plastic cases. (30) coins total. ASW approx. 5.42 oz.	EST	450-500	B
259	(11) Proof sets in straight run 2000 to 2010 in OGP.	EST	170-200	B
260	(5) Silver Proof sets in straight run 2004 to 2008 in OGP.	EST	560-600	B
261	(2) Diff Proof Collections incl 2009 Lincoln's Life Pennies (KY, IN, IL, DC) and 2007 Presidential Dollars (Wash, Adams, Jeff, Madison). All coins ICG PR70 DCAM FDOI with Cert #'s. Housed in two separate Cherry presentation cases w/ COAs from First Commemorative Mint. Bonus: 2007-P Adams Dollar ICG-MS64 Double Edge Lettering Error housed in Cherry presentation box w/ COA from FCM.	EST	100-150	L
262	(2) 2009 DC & US Territories Quarters Silver Proof sets in OGP.	EST	180-200	SE
263	(10) Proof sets in straight run 2011 to 2021 missing only 2016. All in OGP.	EST	425-450	B
264	(4) Silver Proof sets in straight run 2013 to 2016 in OGP.	EST	460-500	B
265	(4) Silver Proof sets in straight run 2017 to 2020 in OGP.	EST	460-500	B
Mint Sets / Proof Sets				
266	(7) 1964 Orphan P (1) & D (1) US Mint sets & (5) Proof sets no longer in paper envelopes but still in OGP plastic sleeves. ASW approx. 4.29 oz. Bonus: 1965 Orphan SMS.	EST	360-450	SE
267	(7) 1976 Bicentennial 3-Coin sets incl (4) Silver Uncirculated sets housed in OGP red envs, (1) Silver Uncirculated set housed in OGP cardboard holder & (2) Silver Proof sets in OGP booklets with papers. ASW approx. 3.64 oz.	EST	325-375	B
268	(12) DIY Proof and Mint sets housed in Whitman plastic cases incl 1957 Proof, 1959 Proof (2), 1959 Mint P/D (2), 1963 Mint D, 1964 Proof, 1964 Mint P, 1968 Mint D, 1969 Mint D (2) & 1972 Proof. Overall quality of sets is excellent. Little to no toning. Inclusion noted only on one penny. ASW approx. 5.32 oz.	EST	420-500	B
269	(26) Orphan P or D US Mint sets and Proof sets 1959 to 2008 no longer in paper envelopes or boxes but still in OGP plastic sleeves/cases. Clad FV approx. \$36 ASW approx. 3.78 oz. The silver sets include a 1959 Proof set, 1963 Proof sets (3) & 2008 Silver Proof set.	EST	325-375	B

LOT	U.S. MINT SETS & PROOF SETS	VALUE	
270	(32) Orphan P or D US Mint sets and Proof sets 1968 - 1981 no longer in paper envelopes or boxes but still in OGP plastic sleeves/cases. FV approx. \$43. Includes (2) 40% Kennedy half-dollars & (3) SMS sets 1966 & 1967. Bonus: (2) plastic cases containing (4) Proof Presidential dollars & (5) Proof NP quarters. Lot being offered at more than 50% discount from Greysheet value.	EST	100-125 B
HARD TIMES/CIVIL WAR ERA			
Encased Postage Stamps			
271	(1) 5 Cent Encased Postage EP-85. Reed rarity rating of R-6 with fewer than (20) examples known. XF details. Mica intact. Brass casing has been cleaned in the past. Highly collectible & innovative example of how private citizens addressed the coin shortage during the Civil War. Every coin collector should have at least one in their collection.	EST	1,000-1,300 SE
MEDALS & TOKENS			
Medals			
272	CHINA 1976 23k GOLD 25mm medal honoring Chiang Kai-shek's 90th birthday, raw in original red box, so some light natural tarnish; AGW .453 oz. (Numista #463556)	EST	2,000-2,200 B
273	CHINA (2) Medals honoring the 70th Anniversary of the Republic of China (1981); GOLD one ounce w/ portrait of Sun Yat-sen, rev flag in plum blossom shape, in capsule; SILVER medal (ASW .523 oz.) w/ portrait of Chiang Kai-shek & same reverse, in official red plastic holder.	EST	4,500-5,500 B
274	CHINA Half ounce GOLD medal issued for the 70th anniversary of the Republic of China (1981); obv w/ Chiang Kai-shek, rev w/ flag over plum blossom shape (as in previous lot), in original holder.	EST	2,000-2,500 B
275	ISRAEL Accum of State of Israel official medals, (292) all appear to be bronze w/ total weight around 65 lbs., most w/ standard 59mm diameter although a few are smaller; most seem to be 1965-70 period; all loose, with dup, some aging, gen VF+ Bonus 1969 10 lira silver commem coin (.7523 oz)	EST	200-300 B (2)
276	US Mint 1 5/16 inch bronze medals of the Presidential series in (2) custom display cases. Collection complete w/ two of each (to show both obv & rev) George Washington to Richard Nixon. All (74) are in Unc condition w/ Denver Mint Marks. There are blank spaces for six more medals. Very attractive collection.	EST	300-400 L
Tokens & Medals			
277	Dealer clean-out hoard of tokens & medals, mostly US, not very organized, noted replica coins, Franklin Mint bronze medals from various series, transport & arcade tokens, presidents & American history, good luck, fantasy items & more.	EST	250-350 B
Franklin Mint & Related			
278	Franklin Mint "mini coin" collections; (3) complete sealed cards w/ Presidential 10mm sterling coins (GW to Nixon), one set has additional Ford, Carter & Reagan coins; (1) empty holder incl w/ magnifier; Long blue holder for "Coins of the United States in Miniature" and baggie w/ numerous examples, not complete, some may be silver.	EST	100-150 B
279	Several popular SILVER Franklin Mint items: (3) Apollo 14 "mini moon silver coins"; (1) First Step on the Moon eyewitness sterling medal; Jimmy Carter inaugural .999 medal (2) all in original packaging.	EST	150-200 B
280	Assortment Franklin Mint productions, mostly bronze, most in original packaging; incl commemorative medals, Christmas medals in card, 1973 large size inaugural medal, many on themes of American history, sets of presidents & automobiles, Lindbergh & more.	EST	150-200 B
281	Stash of Franklin Mint membership tokens; incl 1970-79 in holders, 24k gold plated silver (.208 oz ASW each); & smaller version 1980-82 (.086 oz ASW each); additional (10) membership tokens of various sizes & metals incl bronze, one is 10th anniv medal; total silver content 2.338 oz.	EST	160-180 B
282	The 100 Greatest Stamps of the World, sterling silver mini-ingot collection in clasp box, w/ papers, (2) ingots are missing & may have fallen between the cracks of the blue fuzzy tray & the outer box; roughly 105 grams of sterling comes to abt 3.35 oz ASW	EST	200-300 L
283	Various Franklin Mint silver products: Queen Victoria medal in Cayman Islands philatelic cover; silver handled letter opener; Bahamas \$2 sterling proof 1976 flamingoes; President Ford small inaugural medal (no packaging); Sans Souci German castle medal (from FM Europe); Gov. Evans of US Virgin Islands medal; (11) loose 39mm medals from various series incl religious; most are likely sterling silver, some in original packaging.	EST	500-600 B
284	(10) United Nations Sterling Silver Medals contained in (2) Official United Nations Medallic First Day Covers sets 1972 & 1974. Each Sterling silver medal weighs 0.8 oz. Total ASW approx. 7.4 oz.	EST	650-750 B
285	Postmasters of America Medallic First Day Covers, binder for 1972, issues #12-35, complete less two Christmas issues; each FDC has 39mm sterling silver proof medal matching the theme of the new issue stamp; (24) medals at 350 grains of sterling = 16.1875 oz ASW	EST	1,200-1,400 B
286	(20) Sterling Silver Medals contained in the 1972 Postmasters of America Medallic First Day Covers set. Each Sterling silver medal weighs 0.8 oz & has a fineness of 0.925. Total ASW approx. 14.8 oz.	EST	1,300-1,500 B
287	(3) Gold pieces incl Danbury Mint Ronald Reagan 10KT Inauguration gold piece: 5/8 inch in diameter, 0.03 oz, 0.417 fine, housed in plastic presentation capsule & cardboard box accompanied by supporting documentation & (2) Columbia Mint 24KT St. Gaudens replica Gold pieces: 8.5 mm in diameter, 0.016 oz, .999 fine, housed in cardboard presentation box. Total AGW estimated at 0.0445oz.	EST	200-240 SE

LOT	MEDALS & TOKENS	EST	VALUE	
288	(11) Sterling Silver Medals from various mints w/ variety of topics incl President Trump, Pearl Harbor, Christmas, US Historic, etc. Total ASW 13.96 ozt.	EST	900-1,150	B
MISCELLANEOUS				
Exonomia				
289	(68) Replicas of Early gold (Turban and Liberty Head), Early silver (Trade, Bust, Seated & Morgan dollars), Large Cents & a few other types. All marked "COPY" and not intended to deceive prospective buyers. Quality imitations including many rarities.	EST	85-125	B
Error Coins				
290	(235) Error Cents 1934 // 1970. Owner IDed & housed in 2x2s. Errors noted incl but are not limited to BIE, spiked head, clogged numbers/letters, cracked skull, clips and laminations. Please inspect!	EST	200-300	L
Miscellaneous				
291	(3) Diff Jewelry pieces w/ various coins incorporated. Incl Peace Dollar in bezel w/ chain, (9) Mercury Dimes in bezels connected on chain, (6) silver British 3d (2 sterling/4-50%) & one silver .835 French 50 centimes connected on chain. Interesting group & worth a look.	EST	100-125	B
292	Eclectic Accum incl Rolex spoon, various tokens, medals, cutout coins, money clip, belt buckle, GF Eagle coin bezels, key rings/chains w/ Morgan/Peace Silver dollars, classic commems, seated quarter & many, many others. Definitely worth a look!	EST	200-250	B
293	4-Piece selection of Sterling Silver incl small plate, Seattle World's Fair spoon, St. Christopher medal w/ engraved reverse & a ring. 5.0 ozt ASW. Bonus 3-plated flatware (2 spoons & a fork) added in.	EST	270-325	B
U.S. CURRENCY				
Fractional Currency				
294	(18) 1st Issue // 5th Issue, 3¢ to 50¢ w/ dup. Many mixed condition / faults. Inspect!	EST	90-135	SE
CSA Currency				
295	1862 \$5 Virginia Treasury Note. F/VF.	EST	75-100	SE
296	(4) 1862 \$5 Virginia Treasury Notes SN:188. Plate positions A-D. F-VF.	EST	300-400	SE
297	1862 \$50 Virginia Treasury Note. F/VF.	EST	150-200	SE
298	(4) 1862 \$50 Virginia Treasury Notes SN:4495. Plate positions A-D. F-VF.	EST	600-800	SE
299	1862 \$100 Virginia Treasury Note. F/VF.	EST	170-250	SE
U.S. Large Size Currency				
300	(2) Large size notes incl. 1899 \$1 "Black Eagle" Silver Certificate (F-233) & 1917 \$1 Legal Tender (F-39). Both notes have seen considerable circulation & grade G/VG.	EST	120-160	SE
U.S. Small Size Currency				
301	(6) \$1 Emergency Notes incl (4) Hawaii F-2300 & (2) North Africa F-2306. Condition G.	EST	160-200	SE
302	Uncut Sheet of Four \$5 FRN Series 1995. Gem CU!	EST	80-100	LE
303	2001 & 2004 \$20 notes. This is a rare set of \$20 bills from the Designs in Motion Series of 2001 & 2004. The bills are uncirculated, have matching low serial numbers & come in OGP.	EST	150-200	B
304	(16) 1935 \$1 Silver Certificates incl (6) 1935-E (F-1614), (9) 1935-F (F-1615) & (1) 1935-G (F-1616). Unc.	EST	90-100	SE
305	(47) Crisp \$1 Unc 1935A // 1935H. Some Sequential, Consecutive serial numbers noticed.	EST	200-250	B
306	(50) Crisp \$1 Unc 1953 // 1953B. Some Sequential, Consecutive serial numbers noticed.	EST	200-250	B
307	(75) UNC 1957 \$1 Silver Certificates incl (10) 1957 (F-1619) , (6) 1957-A (F-1620) & (59) 1957-B (F-1621). Many consecutive 1957-B notes.	EST	300-350	SE
308	(22) 1963-B \$1 "Barr" notes incl (16) F-1902-B, (2) F-1902, (1) F-1902-G & (3) F-1902-L. Condition AU-CHU.	EST	60-70	SE
309	(73) Crisp Uncirc 1963 // 2006 \$1 FRN Notes incl "Barr" notes & quite a few Sequential serial number runs. Take a look!	EST	100-130	B
310	(113) UNC \$1 FRN incl (6) 1963A, (8) 1969B, (1) 1969D, (3) 1977, (1) 1985, (4) 1988A, (7) 1995, (29) 1999, (6) 2001, (11) 2003, (26) 2003A & (11) 2006. Many consecutives.	EST	220-270	B
311	(32) Crisp Uncirc 1976 // 2003A \$2 FRN Notes, mostly 1976.	EST	74-10	SE
312	(47) 1928G // 1963A \$2 Red Seal United States Notes. Some interesting serial numbers seen. AU/AU+. Very Useful Group!	EST	270-350	B
313	(60) Crisp Uncirc 1928G // 1963A \$2 Red Seal United States Notes. Some interesting serial numbers seen.	EST	350-450	B
314	(3) Crisp Unc \$2 1976 FRN Two Dollar Notes, First Day of Issue (Chester, PA) w/ Stamp. Sequential serial numbers.	EST	60-80	SE
315	(5) Crisp Unc 1976 \$2 FRN Two Dollar Note First Day of Issue "Northampton, MA Florence Sta" cancel w/ Stamp. Sequential serial numbers w/ Triple 7's!	EST	100-125	SE
316	(8) Crisp Unc 1976 \$2 FRN Two Dollar Notes. Sequential serial numbers.	EST	40-50	SE
317	(20) Crisp Unc 1976 \$2 FRN Two Dollar Note 1st Day of Issue (Phila, PA) w/ Stamp. Sequential, consecutive serial numbers.	EST	250-300	SE

LOT	U.S. CURRENCY		VALUE	
318	(160) \$2 FRN incl (96) 1976, (30) 1995, (25) 2003 & (9) 2003A. Many sequentials. AU/UNC.	EST	320-480	B
319	2003 Texas Coin and Currency Set. Features Uncirculated Varieties of United States Coins and Currency incl: 2 - State of Texas Washington Quarters 1 - \$1 Banknote Series of 2003 1 - \$2 Banknote Series of 2003 Replacement Star Note 1 - \$5 US Banknote Series of 2003 1 - \$10 US Banknote Series of 2003. In OGP with Box, Booklet, and Felt Display Case.	EST	200-250	L
320	(24) Uncirculated notes commercially packaged by the "US and World Reserve Monetary Exchanges" including (7) 2003 \$2, (17) 2003A \$2 "colorized" to honor the State of Pennsylvania. Bonus: Circulated 1953C \$2 and 1963 \$5 Red Seals.	EST	60-70	L
U.S. Small National Currency				
321	1929 \$10 Wilmington, Delaware FR#1801-2 Type 2, The Central National Bank ch. #3395, S/N A-001604. PMG Gem Uncirc 65 EPQ Exceptional Paper Quality. A low serial number RARE note!	EST	2,500-3,000	HWC-SE
U.S. Mixed Currency				
322	\$58 Face Value 1935A // 1957A \$1 & \$5 Silver Certificates, 1963 \$5 Red Seals, 1963A // 1976 \$1 & \$2 FRN. "BARR" notes & a couple of STAR notes seen. Mixed Conditions! Inspect!	EST	74-90	SE
U.S. / Foreign Mixed Groups				
323	(200+) Misc Foreign Currency notes, Military Payment Certs, a few US Notes, etc. Worth a review!	EST	150-175	L
U.S. ACCUMULATIONS				
U.S. Accumulations				
324	(275+) Accumulation US coins incl Indian, Wheat & Memorial cents; Liberty, Buffalo & Jefferson nickels, RSVLT dimes, State quarters, Kennedy halves and Native American dollars. Most coins in Littleton Co. plastic envelopes. Many coins Unc.	EST	120-150	B
325	(130+) Collection in Littleton CC & US Mint plastic envelopes incl Presidential, SBA, Ike & Sac dollars; Washington quarters, Kennedy halves, RSVLT dimes; Liberty, Buffalo & Jefferson nickels, Indian & Lincoln cents. Most of these coins are Unc or Proof. FV approx. \$17.75. Additionally, Silver Quarter, Dimes and War Nickels ASW approx. 1.46 ozt.	EST	120-150	B
326	Accumulation (26) Certified coins including cents, nickels, dimes, quarters, halves & dollars. Some notable coins incl 2005-P SMS Kennedy MS69, 1996-W Dime MS67, 1981-S Kennedy PR70, 1981-S SBA dollar PR69 DCAM Type 1, 1982-S Washington commemorative half-dollar PF69 Ultra Cameo (Smithsonian Institution), and 2008-S Bald Eagle commemorative half-dollar PR70 DCAM. Lot being offered at approx \$5 per slabbed coin. Actual value much higher. Please inspect!	EST	130-250	B
327	Various US Coins, Paper Money, Tokens, Medals incl silver commems, Fractional Currency, Proof & Unc sets, etc, etc. Worth a look!	EST	135-175	B
328	(790+) Accumulation Uncirculated modern (post -1959) clad US coins approx total FV \$152, IDed & housed in (17) Littleton, Harris & Whitman folders. The lot incl \$3.20 FV Jefferson nickels, \$3.40 FV RSVLT dimes, \$1.20 FV Lincoln cents, and \$144 FV Washington quarters.	EST	150-200	L
329	(200+) Balance lot housed in (13) commercial third-party vendor sets, IDed in 2x2s & plastic capsules. Collection includes but not limited to Indian, Wheat & Memorial cents (several errors); Liberty, Buffalo & Jefferson nickels (some colorized), Kennedy halves (one 90% silver), Modern commemoratives (SOL, Congress, World Cup) and several proof sets 1968 // 1987.	EST	150-200	L
330	(10) Third-party coin sets incl cents, nickels, quarters, half-dollars, dollars and currency. Clad FV approx. \$19. ASW approx. 2.16 ozt. Noted were a 2008 US Mint American Legacy Collection & Kennedy Silver Collection.	EST	200-250	L
331	(14) Third-party coin set products incl Indian, Steel & Lincoln cents; Buffalo, War & Jefferson nickels; Mercury & Roosevelt dimes; Barber & Washington quarters; Walking, Franklin & Kennedy half-dollars, and SBA dollars. Clad FV approx. \$16.69. ASW approx. 4.12 ozt. Noted: Shipwreck coin from the Admiral Gardner.	EST	300-350	B
332	(18) Third-party coin sets all either gold-plated, colorized, or hologram including nickels, State quarters, (1) 1964 Kennedy half-dollar, (3) ASEs, Presidential, Sacagawea, & SBA dollars and a \$2 bill. Clad FV approx. \$108.85. ASW approx. 3.36ozt.	EST	360-400	L
333	(33) Third-party & US Mint coin set products incl cents, nickels, dimes, quarters, half-dollars, dollars & currency. Clad FV approx. \$19, ASW approx. 6.22 ozt.	EST	550-600	B
U.S. & Foreign Coin Accumulations				
334	(100s) Medals, Tokens, Coins & Foreign sets, replicas, some silver. A solid mystery lot!	EST	170-220	L (2)
335	Large Dealer Blow-out of WW & US coins, medals, tokens, etc. Held Whitman folders, Capital holders, 3rd party packaging 2x2s. US proof/mint sets & Foreign Mint items in OGP, US type set in Capital holder. NGC slabs & piece of US & Colonial currency also seen. Vast majority IDed. Various silver seen. A great sorting project with MUCH useful!	EST	200-300	L
336	(3) Large Dealer Mystery Boxes of WW & US coins, medals, tokens, replicas & the kitchen sink. Some in binders, plastic 2x2 pgs or flips, 3rd party packaging, US proof sets & other US/Foreign Mint items in OGP, vast majority IDed. Some silver seen. Great many Unc. This is a great mystery lot with plenty to sift through!.	EST	300-400	L (3)

LOT	ANCIENT COINS	EST	VALUE	
Ancient Coins				
337	Group (21) various Indian States, mostly bronze, a few appear silver. Sold AS IS.	EST	90-125	BAG
338	Selection of (20) Greek & Roman coins from 2nd Cent BC to 4th Cent AD; various sizes & thicknesses, silver & bronze; most genuine w/ a couple questionable, mixed faults to sound, excellent for study.	EST	90-110	SE
339	(2) "Widow's Mite" in Littleton packaging. Better than the usual "dug" examples.	EST	100-130	BAG
WORLDWIDE COINS				
Africa Coins				
340	Somali Republic Wholesale lot of (116) special 5-coin sets to honor Pope Benedict XVI, CuNi \$1 fantasy coins in holder, packaging printing in German, (30,000) sets produced.	EST	100-150	L
Asia Coins				
341	Asia Accum, most from the Orient; (37) in 2x2s, several in tourist cards, balance are loose and weigh abt 3.5 lbs; much from China (Empire, cash, Republic, PRC and Taiwan), also Hong Kong, South Korea, Indonesia, Thailand, Nepal and others; at least (3) are silver (China Empire & Republic), also a 1985 Beijing Trade Expo medal showing Great Wall in fancy box; some dup, worn to Unc.	EST	250-350	B
Australia / New Zealand Coins				
342	Australia (12) Boxed sets from 2010 "Young Collectors Backyard Bugs Coins"; colorful folder w/ booklet, incl the (9) Al Brnz \$1 Unc coins showing various insects; KM# 1440-48 only available in these sets, offered for \$50 and up online	EST	500-750	L
British Coins				
343	Bahamas 1971 9-coin Proof Set minted by Franklin Mint. Incl (4) silver coins (ASW 2.8721 ozt). In original packaging w/ papers.	EST	200-250	BAG
344	Barbados 1983 BU set of (8) produced by the Franklin Mint in original blue holder w/ paper, only (141) sets made! (KM# MS11)	EST	200-250	B
345	Great Britain Group of official Royal Mint products: Proof Sets 1970, 1977, 1979, 1981-88; 1981 Wedding & 1990 Queen Mother silver proofs plus UNC on souvenir cards; 1990 large & small size 5p in silver, 1983 & 1986 silver Round Pounds. all in original packaging w/ papers.	EST	200-300	B
346	Great Britain Collection of official Royal Mint proof sets: 1970, 1983, 1986-87, 1990, 1997, 2000 Deluxe, 2001, 2003-04 & 2005 Executive boxed set.	EST	200-300	L
347	(11) Better PROOF sets in original packaging, produced by the Franklin Mint or the Royal Mint; incl Bahamas 1983, British Virgin Islands 1983 (Krause \$150), Cook Islands 1983, East Caribbean 1965, Guernsey 1981, Jersey 1981, Papua New Guinea 1981, St. Helena & Ascension 1984, Seychelles 1982, Trinidad & Tobago 1983; and Special "Caribbean Collector" proof set of (7) from diff islands, two are sterling silver (BVI & Cayman).	EST	250-350	B
Canada Coins				
348	(10) 1965 Dollars MS60+. ASW 6 oz.	EST	420-450	B
349	1966 6-coin Unc Set (ASW 1.11ozt) in OGP, no envelope.	EST	80-90	SE
350	2005 Canada Victory in Europe 60th anniv coin & medallion set by RCM in 2005, incl sterling silver "V" design 5¢ & a bronze medal; (8) still shrink-wrapped boxed sets	EST	150-200	B
351	(9) Canada Unc sets incl 1963, 1963, 1964 (2), 1965 (2), 1966 (2) & 1967. No toning noted. Mirror/PL like finish. In original plastic sleeves. ASW approx. 9.97 ozt.	EST	750-800	SE
352	Collection (251) 1929 // 1979 Cents, (15) 5¢ 1953 // 1978 & (51) Dollars 1973 // 1994 Proof & Prooflike incl (23) 50% silver dollars, remainder of dollars clad. Total ASW 8.625 ozt.	EST	500-600	L
Europe Coins				
353	Poland Wholesale accum special sets c.2003 from the Polish Mint; incl (9) Unc coins in circulation 1gr to 5zl, of different years, plus 2zl commem 2003 for the pope's 25th anniv. (57) sets total	EST	150-250	L
354	Russia (8) coins from the Empire; 1k 1798 EM, F; 2k 1800 KM, F; 5k 1807 KM, F; 5k 1831 CM VF; 10k 1823 PD, F; 10k 1833 CM, F; 1 ruble 1810 FG, F+; 1r 1899 FZ, F; grades are approx. Krause value \$542 w/ (3) coins being silver.	EST	250-300	SE
355	Sovereign Military Order of Malta, Wholesale lot of (395) 5-coin sets from 2005 honoring Pope John Paul II, CuNi 1 lira coins, text of packaging in German; these retail abt \$14 each online.	EST	300-400	L (2)
Israel Coinage				
356	Group of official mint sets, incl sealed cards 1965-69; long plastic holders 1971-76, 1978; Hanukka sets 1992, 1995-97, 1999; several other official items. PIEDFORT sets 1981-88, 1996-97, 1999; also (6) diff State of Israel bronze medals	EST	200-250	B
Foreign Silver Coins				
357	Australia 1999 Kookaburra 1 oz Silver, Delaware State Quarter privy mark. OGP.	EST	90-115	SE
358	Australia 2012 Boxed set of (3) 50¢ commems Australian Outback wildlife, kookaburra, kangaroo & koala, .999 fine silver half-ounce colored coins, in original packaging	EST	150-200	B

LOT	WORLDWIDE COINS	EST	VALUE	
359	Australia (2) \$1 Dollar Silver Koalas incl 2016P (One of First 3000 Struck) and 2017P (One of First 2500 Struck) both NGC MS69. Each weighs 1 ozt and is .999 fine. Beautiful coins!	EST	200-250	SE
360	Australia (6) silver commems in original packaging; (4) Australian State \$10 Unc sterling (Queensland, Western Australia, Northern Territory & Capital Territory); (3) Kookaburra \$1 .999 proofs for US State Quarters (DE, PA, NJ); total ASW 5.3762 ozt.	EST	450-550	B
361	Austria Boxed set of silver commems for 1976 Winter Olympics at Innsbruck; (7) coins issued 1974-76, each in proof & special proof versions ("Stempelglanz" & "Polierete Platte"); some natural tarnish incl rainbow coloring; ASW 6.9132 oz.	EST	500-600	B
362	Belize 1983 Silver Proof set of (8) produced by the Franklin Mint, in original black holder w/ paper; each coin in sterling silver (KM# PS20) only 241 made!	EST	250-300	B
363	Canada 1976 Montreal Olympics boxed set of (14) \$5 & (14) \$10 sterling silver commemoratives, each in capsule in official wooden box; ASW 30.352	EST	2,000-2,500	B
364	Canada 1988 Calgary Winter Olympics set of (10) sterling silver commemoratives; in green fuzzy case w/ papers; ASW 10.143 ozt.	EST	700-800	L
365	Canada 2013 Fractional 5-Coin Set, Maple Leaf Reverse Proof Silver. ANACS RP70. Housed in wooden display box.	EST	300-400	BAG
366	Canada \$8.50 FV 80% silver dimes. ASW 5.1 ozt.	EST	320-375	BAG
367	China Republic (Taiwan) Silver coins & medals: Chinese souvenir plastic holder w/ (4) 1965 coins for Sun Yat-sen centennial, \$5, \$10, \$50 and \$100 (KM# 537-40 / 0.9479 ozt); 1971 medal in original holder for 60th anniv ROC (.45 ozt); 1981 medal for 70th anniv ROC (.523 ozt); 1991 1 oz \$50 in original holder for ROC 80th anniv; additional China PRC 1995 boxed set of (12) silver plated medallions for different constellations, w/ papers.	EST	250-350	L
368	China PRC (2) \$10 Silver Pandas incl 2017 NGC MS69 & 2018 PCGS MS70 First Strike 35th Anniversary. Each weighs 30g and is .999 fine. Beautiful coins!	EST	200-250	SE
369	Great Britain (5) silver piedfort coins in Royal Mint packaging; 1990 5p new small size; 1982 20p new coin; Round Pounds 1984-85, 1988 (Krause P2, P4-5, P8, P12)	EST	200-300	B
370	Germany Silver 1929A 5 RM & 3 RM, 10th Anniversary of the Weimar Constitution. Avg circ.	EST	200-300	SE
371	Germany (9) Circ silver (.900) 1934 // 1935, 5 RM Potsdam Church. ASW 3.614 ozt.	EST	220-250	BAG
372	Germany (20) Circ silver (.900) 1935 // 1937 Hindenburg 5RM. ASW 8.03 ozt	EST	500-550	B
373	Germany Stock (32) 5m silver coins, regular issue & commemoratives 1951-77, couple dup, most raw so some tarnish or patina from storage; 7.2032 oz ASW total.	EST	550-600	B
374	Germany Stock (45) 10m silver commemoratives 1972-99, couple dup, most raw so some tarnish or patina from storage; 14.0175 oz ASW total.	EST	1,000-1,200	B
375	Germany small coin album w/ (29) 10 mark silver commemoratives 1987-1996 w/ a couple dupes; ASW 9.0335	EST	600-700	B
376	Panama (4) Slabbed silver coins: 10c 1904 PCGS MS64; 1/4b 1934 ANACS AU58 & 1947 NGC MS64; 1/2b 1932 ANACS AU58; attractive & popular coins.	EST	350-450	B
377	Switzerland Silver coins: 1/2fr (2), 1fr (3), 2fr (5) and 5fr (13); range from 1933-67, several of the 5fr have patina from previous storage in plastic, several Unc; total ASW=7.1144 oz	EST	550-600	B
378	1994 Boxed set of (3) silver commems for the 50th anniv Allied Invasion of Europe, produced by the Royal Mint, incl commem 50p, US silver \$1 and French 1 franc; w/ all papers, ASW 1.8175 ozt.	EST	150-200	B
Foreign Gold Coins				
379	China PRC 1989 1/10 ounce Panda in 14k smooth bezel	EST	450-550	SE
380	Great Britain 1984 Half Sovereign in original Royal Mint box w/ paper, 4 grams 22k gold, only (22,000) minted; AGW .1176 ozt.	EST	600-700	B
381	Niue 2010 \$25 60th Anniversary Peanuts showing color enhanced Snoopy, .999 fine gold, only (2,000) produced by PAMP in original holder w/ paper; AGW .25 ozt.	EST	1,100-1,300	B
382	Panama 1982 20b .500 gold coin produced by Franklin Mint, hummingbird on reverse, in original box w/ papers, AGW .0344 ozt.	EST	160-200	B
383	Singapore 1990 Boxed set of (5) .999 fine gold Lions, 1oz, 1/2 oz, 1/4 oz, 1/10 oz (5,000 minted each) and 1/20 oz (8,000 minted); housed in original wooden box w/ COA & brochure. AGW 1.9 ozt.	EST	8,000-10,000	B
Foreign Platinum Coins				
384	Switzerland 1986 100fr "Shooting Thaler" one ounce .999 fine platinum, proof in original case w/ paper, only (10,000) minted at Huguenin.	EST	2,100-2,200	B
Foreign Palladium Coins				
385	Switzerland 1990 50fr "Shooting Thaler" one ounce .999 palladium proof, only (7,500) minted by Huguenin, reverse shows Tell's son; in original holder w/ paper.	EST	1,600-1,800	B
Foreign Coin Accumulations				
386	Foreign Proof and Mint sets, primarily British but a couple Israel, Netherlands & Euro sets seen. OGP.	EST	80-90	B

LOT	WORLDWIDE COINS	VALUE	
387	Group of official WW Unc & Proof sets; Australia 1986; Cook Islands proof 1975; Denmark 1978; Falkland Islands 1974 proof; GB 1988; Malawi 1971, Maldives 1984, Morocco 1974/75, New Zealand 1988 and St. Helena/Ascension 1984; damage to pkg of Malawai, others like new original packaging; final Krause CV \$232.50	EST	120-160 B
388	Huge stash couple (1000) WW coins, majority in 2x2s in long boxes or plastic pages, many IDed, also some extras in full or broken sets; noted 19th-20th century regulars of all sizes, did not notice any silver but may be a few; some duplication incl binder w/ San Marino UNC 1 lira to 10 lire coins; some tokens sprinkled in as well; worn to Unc	EST	350-450 L (2)
389	Coin Sets of all Nations by Franklin Mint, (4) boxed sets holding (88) different individual country panels sorted Albania to Zimbabwe; good selection of popular countries; a subscription service c.1982-86, also includes group of info cards for each country; lately separate panels have been selling on eBay for \$7-\$20 each	EST	400-500 L (2)

WORLDWIDE CURRENCY

Foreign Currency

390	Australia 1996 Uncut bottom margin block of (4) polymer A\$5 notes, in official folder.	EST	80-110 LE
391	Austria & Italy Banknote collections in homemade albums; Austria (125) primarily Notgeld sorted by set plus a few late Empire notes; Italy (25) 1940s-70s lire plus local emergency money (banks of Brescia, Riuili, Credito Italiano, Ferrara); earlies worn, modern XF to crisp	EST	150-250 L
392	Canada Unc 1954 \$1 (4) & \$2 (4). \$1 incl Beattie-Rasminsky, \$2 incl scarce Beattie-Coyne (1), Lawson-Bouey (3). Very nice group!	EST	74-90 SE
393	Canada (22) CU \$1 1969-1975 issue P-85a. (3) sets of sequential serial numbers: (10) notes AA8951481 - AA8951490; (6) notes GG 4459771 - GG4459776; (6) notes MH2247909 - MH2247914.	EST	84-100 SE
394	Canada (30) CU \$1 1969-1975 issue P-85a sequential serial number groups incl: (7) groups of (2) notes, (4) groups of (3) notes & (1) group of (4) notes.	EST	90-115 SE
395	Canada (51) CU \$1 1969-1975 issue P-85a. Many different 2 & 3 letter prefix serial numbers. Nice group!	EST	100-125 SE
396	Japan Group (11) pieces Edo period scrip (hansatsu), long rectangular notes, in circulated condition w/ some typical light soiling, various black or red handstamps or chops; not IDed, none w/ damage, F+	EST	140-180 LE
397	Russia USSR (6) 1925-37 banknotes: P# 189a 3r, 190a 5r, 198a 1ch, 203a 3ch, 204a 5ch and 206 1 gold ruble; range from VF- to XF w/ normal folds & wrinkles	EST	200-300 LE
398	Estate balance lot of WW currency, unsorted, very worn to crisp, noted Japan & occupied Philippines, China, Hong Kong, Brazil, Italy, Greece, France incl locals, AMG, British Armed Forces, Iraq, Thailand and more; nice selection, many in plastic sleeves	EST	100-140 B
399	Small assortment of WW notes, culled from stamp donations; some typical Japan, German Notgeld and the like, also Ottoman Empire KM# 69, 71, 72, 79, 85, 86, 96 (gen VF); Israel #10c, 12c, 13c, 29a, 30b (AU to crisp); Iceland 44 crisp; Zimbabwe 60; AMG Germany 5 mark, US Fractional 4th issue 10¢, 25¢ and 50¢; 5th issue 50¢ in typical worn conditions (proceeds benefit the American Philatelic Society)	EST	100-140 LE
400	Stash of WW currency, loose & unsorted, only a few sleeved, several (100) incl Indonesia, Japanese Occupations, Argentina, Greece, France, Bulgaria, German Inflation, Brazil, China, Italy, Peru, Iraq and more; very worn to crisp.	EST	200-300 L
401	The Most Treasured Banknotes of the World, a Fleetwood production c.1984, (3) albums holding (118) different WW banknotes on panels w/ text & clear window holding crisp note; many better incl various East Caribbean, Gibraltar, Guernsey, Falklands £1, Japan ¥500, Bahamas (#35b \$130), more	EST	350-450 L
402	Assortment of WW currency, some of the usual Japanese Occupations & Latin America; also Ireland, Scotland £5 Jack Nicklaus commem, German Inflation to 3rd Reich plus a stash of Notgeld (Ger & Aus), Irish Sweepstakes notes (and a few other ephemera items), more; noted a few spendable (A\$50, MX\$70); nice Fiji 1940 5sh note AU but w/ paper adherences on back from previous mounting in scrapbook! (Krause 37c CV \$160 for VF); good varieties w/ minor dup, worn to crisp.	EST	350-450 B
403	The World Currency Collection by The Historic Providence Mint, 5-vol collection holding (160) panels w/ crisp banknote and UN Flag stamp for each country; attractive notes w/ some better incl East Caribbean (several different), Qatar, Bahamas and others. also includes little "newsletters" that came w/ subscription.	EST	500-600 L

NUMISMATIC REFERENCE & SUPPLIES

Numismatic Reference

404	Dealer clean-out literature; Krause World Coins catalogs 18th Cent 6th ed, 19th Cent 7th ed. 20th Cent 41st ed and 21st Cent 8th ed.; Cherrypickers' Guide 4th ed; English Paper Money by Duggleby; Penny Whimsy by Sheldon; Lincoln Cent Encyclopedia by Anderson; Obsolete Banknotes of Pennsylvania by Wismer; Canadian Colonial Tokens 7th ed by Cross; Seaby's Catalogue of Roman Coins (1948); others; used to gently used	EST	120-140 L (2)
-----	--	-----	---------------

Numismatic Supplies

405	(70) Used Whitman folders for Cents (Large, Indian, Lincoln), Nickels (Shield, Liberty, Buffalo, Jefferson), Dimes (Seated, Barber, Mercury, RSVLT), Quarters (Barber, Standing, Washington), Half-dollars (Barber, Walking, Franklin, Kennedy), and Dollars (Ikes, Sacs). Expect dup.	EST	40-70 B
-----	--	-----	---------

LOT	NUMISMATIC REFERENCE & SUPPLIES		VALUE	
406	(70) Used mostly Whitman folders for Cents (Indian, Lincoln), Nickels (Liberty, Buffalo, Jefferson), Dimes (Mercury, RSVLT), Quarters (Washington, State/NP), Half-dollars (Walking, Franklin, Kennedy) and Dollars (Peace, Ikes, Sacs). Expect duplicates.	EST	40-70	L
407	(8) Metal storage boxes for 2x2s (3), for general storage with keys (2) and for general storage with no keys (3).	EST	50-75	L
408	(43) New State Quarter- related Whitman and Harris folders. Expect duplicates.	EST	50-100	L
409	(22) New Whitman folders (no coins) incl. (2) each Indian Head pennies 1857-1909 #9003, Liberty nickels 1883-1912 #9007, Buffalo nickels 1913-1938 #9006, Mercury dimes 1916-1945 #9014, Roosevelt dimes 1946-1964 #9029, Liberty Standing quarters 1916-1930 #9017, Washington quarters 1932-1964 #9018 & 9031, Liberty walking halves 1916-1947 # 9021 and 9027, and Franklin halves 1948-1963 #9032.	EST	74-125	B
410	(8) Used Dansco Albums including Half-cents #7098, 2 cent/3 cent #6108, Roosevelt dimes #8125, (2) Indian Head #7101, Morgan dollars #7179, and (2) US Type no #. Most albums in very good condition but a few may contain graffiti or may be missing one or two of plastic sleeves.	EST	80-100	B
411	(11) Large size presentation cases for Silver Eagles, slabs & quarter rolls made of Cherrywood (9) or Leather (3). Bonus: (50) P or D gold-plated quarters, \$1 Series 2013 FRN Unc with low serial# B 00011420 A, 2016-S PCGS SP69 Native American Enhanced \$1.	EST	100-125	L (2)
412	(30) Used cardboard and plastic coin storage boxes of various sizes for 2x2s, slabs and mint/proof sets. Overall condition very good to excellent. Bonus: Various sized 2x2s, coin roll wraps and (100) penny / nickel coin tubes.	EST	100-125	L

DESCRIPTIONS

AG	Almost Good	MS	Mint State
AGW	Actual Gold Weight	MS63	Choice Uncirculated
ANACS	American Numismatic Association Certification Service	MS65	Gem Uncirculated
ASW	Actual Silver Weight	NGC	Numismatic Guaranty Corp
AU	Almost Uncirculated	obv	Obverse
Avg	Average	OGH	PCGS Old Green Holder
BU	Brilliant Uncirculated	orig	Original
Ch	Choice	P	Photo
circ	Circulated	PCGS	Professional Coin Grading Service
curr	Currency	PF	Proof
diff	Different	PPQ	Premium Paper Quality
dup	Duplication	PR	Proof
env	Environmental	P/L	Proof Like
EF	Extra Fine	rev	Reverse
EPQ	Exceptional Paper Quality	scrs	Scratches
EST	Estimate Fair Value	UL	Upper Left
F	Fine	unc	Uncirculated
Fr	Fair	UR	Upper Right
FRN	Federal Reserve Note	VG	Very Good
G	Good	VF	Very Fine
LL	Lower Left	WP	Web Photo
LR	Lower Right	XF	Extra Fine

EXPANDED DESCRIPTIONS

If you desire more information about any lot our staff would be happy to provide additional details & scans—as much as practical; just call (or write) at least 10 days or more before the sale.

AUCTION RESULTS

To obtain Prices Realized visit our website at www.dutchcountryauctions.com and Click on *Current Auction* or for other information please call after 11 a.m. the Tuesday after the auction (302-478-8740).

CONSIGNMENT DEADLINES

We are always looking for new consignments! We are currently accepting consignments for Coin & Currency Sale #49 October 15, 2026. The *approximate* closing date for consignments is July 29, 2026.

AUCTION SCHEDULE

Auction	Date of Sale	Approx. Consignment Deadline
#365	July 14-16, 2026	Closed
Coin & Currency Sale #48	August 13, 2026	May 27, 2026
#366 & 366A	September 15-16, 2026	Closed
Coin & Currency Sale #49	October 15, 2026	July 29, 2026