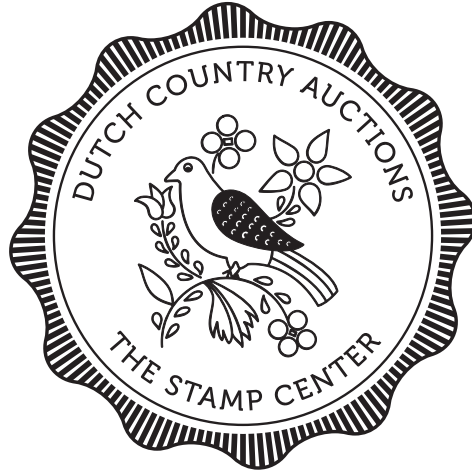


# DUTCH COUNTRY AUCTIONS

The Stamp Center



*Presents*

## **COIN & CURRENCY SALE #46**

*Now In Our 47th Year*

**Thursday, April 9, 2026 - 1 pm ET**

---

**302-478-8740**

**[www.dutchcountryauctions.com](http://www.dutchcountryauctions.com)**

**4115 Concord Pike • Wilmington, DE 19803**

---

### **HOURS (ET)**

**Monday - Friday: 9:30 am - 4:30 pm**

Please note: We are currently open by appointment only during our regular business hours. Please call or email to schedule an appointment.

## **CONDITIONS OF SALE**

### **Bidding**

1. The placing of a bid will constitute acceptance of the conditions of sale.
2. All bids are per lot as numbered in the catalog. The right is reserved to withdraw any lot or lots and to group two or more lots.
3. Lots are sold to the highest bidder at one advance over the second highest bid. The auctioneer shall regulate the bidding and in the event of any dispute the auctioneer's decision shall be final.
4. The auctioneer shall not be liable for errors and omissions in executing instructions to bid.
5. Unlimited bids and bids believed not to be made in good faith will be respectfully declined.
6. Minimum bid on any lot is \$50.00.
7. All lots will be sold at the price for which they are knocked down by the auctioneer, plus a commission of 15%.

### **Payment of Purchases**

8. Successful bidders will be notified of lots purchased and must remit before lots are delivered. Persons who are known to us may, at our option, have purchases forwarded for immediate payment.
9. Terms are immediate payment in U.S. funds on receipt of the invoice. Payment by credit card will be subject to a 2% service charge.
10. The mode of shipment shall be at our option unless we are given specific instructions. A minimum charge of \$1.50 will be made in addition to postage, insurance, and handling.
11. Successful bidders agree to pay for lots as specified above and no credit is extended. For overdue accounts a late charge of 5% per month (minimum \$30.00) will be charged. Accounts are considered overdue after (30) days.

### **Quality**

12. Any lot, the description of which is incorrect, is returnable within ten (10) days of receipt and must be received within four weeks from the date of the auction. All disputed lots must be returned intact in the condition received. The following lots may not be returned without prior approval: lots from buyers who have had the opportunity to examine them before the sale; lots described as having defects or faults may not be returned because of faults; and, lots in which the buyer has bid more than double our estimate. No illustrated lot may be returned because of centering, margins, or other factors shown in the illustrations.

### **Authenticity**

13. All lots are sold as genuine, but should any lot be proved otherwise by written opinion of any responsible authority acceptable to us, immediate refund of the full purchase price will be made, provided we are notified in writing within 14 days from date of sale that an opinion is being sought. If claim is not made within this period, no lots are returnable for any reason at any time. We will not be responsible for any charges incurred by the buyer for expertization fees and costs unless the opinion states the item is not genuine, in which case we will pay actual costs up to a maximum of \$100.00. In the event an item is proved "not as described" it is returnable for a full refund. Any lot which has a certificate dated within the last five years is sold in accordance with the certificate and is not returnable for any reason including an opinion obtained in a new certificate after the sale. While we occasionally suggest what grade a coin may receive if certified, we do guarantee that grade (or any other grade) if a coin is submitted for certification.

Russell W. Eggert  
Owner  
Licensed & Bonded Auctioneer  
Member



**“CUSTOMER SATISFACTION IS OUR PLEDGE”**

# Dutch Country Auctions

COIN & CURRENCY SALE #46

## INDEX OF SALE

### IMPORTANT NOTICE

15% buyers commission is added to the hammer price of all lots.

**Thursday, April 9, 2026 1:00 PM**

### LOTS

1-148	U.S. Coins
149-153	U.S. Gold
154-161	U.S. Types
162-164	Classic Commemoratives
165-186	Modern Commemoratives
187-209	Modern American Eagles
210-234	Silver Coins
235-240	Silver & Gold Bars/Ingots/Rounds/Medals
241-278	U.S. Mint Sets & Proof Sets
279	Hard Times/Civil War Era
280-297	Medals & Tokens
298-303	Miscellaneous
304-325	U.S. Currency
326-350	U.S. Coin Accumms
351-401	Worldwide Coins
402-411	Worldwide Currency
412-416	Numismatic Reference & Supplies

### INSPECTION

Inspection of Sale #46 will begin on **Tuesday, March 24, 2026** by **APPOINTMENT ONLY**. Please call us at 302-478-8740 or email at [auctions@dutchcountryauctions.com](mailto:auctions@dutchcountryauctions.com) to schedule an appointment.

### AUCTION DAY

Doors open at 12:30 PM on auction days. We will continue to offer live internet bidding via Stamp Auction Network.

### BIDDING INCREMENTS

Bids	Increment
up to \$100	\$2
\$100 up to \$200	\$5
\$200 up to \$500	\$10
\$500 up to \$1,000	\$25
\$1,000 up to \$3,000	\$50
\$3,000 up to \$7,000	\$100
\$7000 up to \$10,000	\$200
\$10,000 up to \$15,000	\$500
\$15,000+	\$1,000

LOT	U.S. COINS		VALUE	
<b>Colonial Coins</b>				
1	1788 Massachusetts Cent F	EST	275-325	SE
2	(3) Diff Colonials: 1786 Connecticut Copper Draped Bust G; 1738 France 2 Sols-24 Deniers Paris mint XF w/ dings; 1775 George III Half Penny AG-F	EST	300-350	SE
<b>Half Cents</b>				
3	1810 VF25 BN original.	EST	375-475	SE
4	1835 Classic Head Half Cent XF/AU. Possible old cleaning. Great eye appeal!	EST	120-150	SE
5	1856 Half-Cent AU58 beautiful original.	EST	175-225	SE
<b>Large Cents</b>				
6	1801 Normal Reverse VF. Attractive BN original.	EST	550-625	SE
7	1805 VG details with typical corrosion primarily on obverse. Legends and date clear.	EST	110-160	SE
8	1829 Matron Head Large Letters. PCGS G04.	EST	40-60	SE
9	1846 "Small Date" F-VF	EST	30-35	SE
10	(51) Accumulation incl. mostly culls with either no date or damaged/holed coins with dates. Draped Bust to Braided Hair.	EST	150-200	LE
<b>Indian Cents</b>				
11	1863 Unc MS60+	EST	160-320	SE
12	1903 AU	EST	30-40	SE
13	(69) Indian Cents. Avg Circulation. Please inspect!	EST	50-75	B
14	(36) Partial set incl 1862 // 1865, 1879 // 1883, 1885, 1887 // 1893, 1895 // 1908 and 1909 plus dup. Housed in Dansco album #7101. Varied Condition G-EF.	EST	120-150	BAG
<b>Lincoln Cents</b>				
15	1911-D ANACS MS64 RB	EST	350-375	SE
16	1913-S ANACS MS64 BRN	EST	375-425	SE
17	1931 PCGS MS64 RD	EST	95-110	SE
18	(5) Diff all NGC Certified MS66 RED incl: 1951-D, 1952, 1955-S, 1957-D and 1958.	EST	130-150	BAG
19	(170) incl (81) in almost complete set 1909 VDB // 1940-S in Whitman folder #9004. Missing 1909-S VDB, 1909-S, 1910-S, 1911-S, 1914-D, 1915-S, 1924-D & 1931-S. Remainder of coins (89) mostly 1911 // 1920. Condition generally G-VG.	EST	85-150	BAG
20	(193) in a partial set 1909 // 1982. All key dates and semi-key dates are replicas marked "COPY" and are not intended to deceive prospective buyers/collectors. The balance of the coins are genuine and above average grade housed in Dansco album #7100. Please inspect!	EST	200-250	BAG
21	(200+) Diff in a partial set 1909 // 1995-D. Missing key/semi-key dates & others. Mostly circulated but many coins after 1955 AU/Unc. Housed in Dansco album #7100.	EST	180-220	L
22	(386) Accumulation of nearly complete set 1909 // 2019 missing key dates 1909-S VDB, 1909-S, 1914-D, 1922 Plain, 1924-D, 1931-S and a few later dates. Expect some duplication. Early dates avg circ to later dates AU/unc. Housed in Dansco album #7100 and (2) Whitman folders #8196 and 9000. Very nice collection worth review.	EST	280-320	L
23	(450+) post-1941 thru 1970s Pennies housed in (6) Whitman folders & (3) Whitman albums. Pennies in folders mostly avg circulation. Pennies in albums mostly AU/UNC.	EST	45-60	B
24	(1000) Steel Cents 1943 P, D & S, avg circ.	EST	75-100	B
25	(3000) Wheat Cents P, D and S mint. Apx (100) are IDed & housed in 2x2s.	EST	125-150	B
26	Accumulation Lincoln Cents consisting of approx \$15 FV of Wheat cents and \$15 FV of Memorial cents housed in (8) albums & (60+) folders. Grades from G to Unc.	EST	125-150	L
<b>1c Groups / Collections</b>				
27	Group (2) Half Cents & (10) Large Cents. Incl: Halves 1803 & 1828. Large Cents: 1803, 1827, 1838, 1840, 1847 (2), 1851, 1852, 1853 (2). All w/ problems; cleaned, environmental damage, etc. Still Useful. Review!	EST	125-160	SE
<b>Two Cent Pieces</b>				
28	(25) 2-Cent piece accum incl 1864 Large Motto (15) & 1865 (10). Mixed condition AG-VG.	EST	250-400	BAG
<b>Three Cent Pieces</b>				
29	(3) incl 1865 (1) G and 1868 (2) VG-F.	EST	60-75	SE
<b>Shield Nickels</b>				
30	1883 XF original.	EST	64-70	SE
31	(3) incl 1868 (2) and 1869 (1). Condition G.	EST	90-105	SE
<b>Liberty Nickels</b>				
32	(200) Liberty Nickels Accum. AG-F. All dates easily identifiable.	EST	75-100	B

LOT	U.S. COINS		VALUE	
<b>Buffalo Nickels</b>				
33	1936-D 3½ Legs FS-901 (FS-019) ANACS Fine Details - Damaged Net VG8. This is the famous 3½ Legs variety of the 36-D. It was created as result of excessive polishing of the rev die resulting in a loss of detail on the buffalo's front foreleg. The "damage" referred to on the ANACS label is limited to just a small obv rim imperfection above LIB and should not have been mentioned. A perusal of various auction sales puts the value of this coin in the range indicated but it could just as easily have graded Fine-15 in which case its value would be double. Virtually all known examples are well-circulated. PCGS shows that of 313 total graded, only 2 were considered mint state. An ANACS G4 example sold for \$504 at a Stacks Bowers auction in July 2023.	EST	300-500	BAG
34	(160) 1913 // 1938-D avg circ all readable dates.	EST	80-160	BAG
35	(200) 1913 // 1938-D with dates AG-VG	EST	100-120	B
36	(225) No/partial dates 1913 // 1938-D.	EST	50-75	BAG
<b>Jefferson Nickels</b>				
37	(107) Jefferson Nickel collection 1938 // 1983-D. As expected early coins are circulated but several early Uncs noted. Most coins after 1959 are Unc. Housed in two Whitman albums #9409 and #9410.	EST	85-105	BAG
38	(111) Jefferson Nickel collection 1938 // 1987 missing only 1982-P, 1985-D 1986-D and 1987-D. As expected early coins are circulated. Most coins after 1959 are Unc. Housed in two Whitman albums #9409 and #9410.	EST	80-100	BAG
39	(236) incl complete set 1938 // 1971 and nearly complete set 1971-D // 2019-P missing most S-mint coins and a few others. Early coins avg circ while later dates AU/Unc. Housed in Whitman album #9116 & Whitman folders #9039 and #9035.	EST	120-150	B
<b>5c Groups / Collections</b>				
40	(193) Nickels incl (30) Jefferson pre-1955, (124) Buffalo & (39) Liberty in Whitman folders. Avg Circ.	EST	150-200	B
<b>Half Dimes</b>				
41	(12) incl 1839, 1849, 1853 Arrows (4), 1854, 1857 (2), 1861, 1871 & 1873. Varied condition AG-F.	EST	300-360	SE
42	(15) Seated Half-Dimes incl 1839, 1840-O, 1848, 1858, 1860-O, 1861 (2), 1867-S, 1869, 1869-S, 1871, 1872 (2), 1873 & 1873-S. Mixed condition AG-VG.	EST	450-550	SE
<b>Seated Dimes</b>				
43	(14) Seated Dimes incl 1838, 1843, 1845, 1851, 1853-O, 1856, 1856-O, 1873, 1873-S, 1875, 1876-CC, 1877-CC (2) & 1882. Mixed condition AG-VF with most G-F.	EST	425-675	SE
<b>Barber Dimes</b>				
44	1909-D ANACS MS 62. Attractive peripheral toning highlights the details of this coin.	EST	525-625	SE
45	(11) Dimes incl 1892, 1897, 1902, 1907, 1909, 1910, 1912 (2), 1913, 1914, 1914-D. Condition mostly G/VG.	EST	85-100	SE
46	(29) incl 1892, 1898 (2), 1900, 1901, 1902, 1903, 1904, 1905 (2), 1905-O, 1906 (2), 1906-O, 1907, 1908, 1908-D, 1910, 1911, 1912, 1912-D (2), 1913 (3), 1914 (3) and 1916-S. Condition varies AG - F.	EST	200-320	SE
<b>Mercury Dimes</b>				
47	(66) Diff in a partial set 1916 // 1945-D. Avg circ. Housed in Whitman folder #9014. ASW approx. 4.77 ozt.	EST	450-500	SE
48	(70) Diff in an almost complete set 1916 // 1945-D missing only 1916-D, 1921-D, 1926-S, 1928-D, 1931-S & 1931-D. Mixed circulated condition. Housed in LOC Album Vol10. ASW approx 5.06 ozt.	EST	310-350	BAG
49	(73) Diff in partial set 1916 // 1945-D missing only 1916-D, 1921, 1921-D and 1931-D. Mixed circulated condition. Housed in Whitman folder #9014. ASW approx 5.28 ozt.	EST	325-350	SE
50	(75) Full Whitman folder (#9043) of random Mercury silver dimes. Expect many dup. Avg circulated with later dates higher grade. ASW approx 5.42 ozt.	EST	550-600	SE
51	(76) Diff in an almost complete set 1916 // 1945-D missing only 1916-D. Mixed circulated condition. Housed in Whitman folder #9014. ASW approx 5.49 ozt.	EST	350-375	SE
52	(118) Full Whitman folder #9014 Mercury dimes. Complete set 1916 // 1945-S except for 1916-D. The remainder are duplicates in a 2nd folder. Avg circulated with later dates higher grade. ASW approx 8.53 ozt.	EST	860-920	BAG
53	(360) 1916 // 1945 IDed and housed in 2x2s. AG-VF. Several Barber Quarters included in lot. ASW approx 26.04 ozt.	EST	1,800-2,200	L
<b>Roosevelt Dimes</b>				
54	(48) Diff in complete set 1946//1964-D (circulated) housed in Whitman folder #9029. ASW approx 3.47 ozt.	EST	200-240	BAG
55	(49) Diff in complete set 1946 // 1964-D. Most appear to have been cleaned. A few AU noted with later dates. Housed in Harris folder. ASW approx 3.54 ozt.	EST	280-300	SE
56	(53) Diff in complete set 1946//1968-D (circulated) housed in Whitman folder #9029. ASW approx 3.83 ozt.	EST	200-240	BAG
57	(71) Complete set 1946 // 1977D circulated with later dates better incl several Uncs. ASW approx 5.13 ozt.	EST	220-240	SE
58	(77) Full Whitman folder #9029 Roosevelt silver dimes. Complete set 1946 // 1964-D. The remainder are duplicates. Better grade circulated coins. ASW approx. 5.57 ozt.	EST	560-600	SE

LOT	U.S. COINS	EST	VALUE	
59	(224) Accumulation incl (48) silver dimes 1946 // 1964 (avg circ) and (176) clad dimes 1965 // 2019-D (mostly Unc) with duplicates & missing S- Mint coins. Housed in (2) Whitman folders #1939 and #9034 & (1) Whitman album #9119. ASW approx 3.47 ozt.	EST	350-400	BAG
60	(26) SGS Certified incl 1953 P ,D, S (MS70), 1959 // 1964 incl P (MS70) and P (PR70). Two D-mint coins (MS70) 1959 // 1964. ASW approx 1.88 ozt.	EST	130-200	B
61	(20) 1961 // 1964 AU/Unc housed in 2x2s. ASW approx 1.44 ozt.	EST	115-130	LE
62	(15) 1962 BU. ASW approx 1.08 ozt.	EST	85-100	SE
63	(130) Complete SGS (Star Grading Service) set 1965 // 2007 incl P&D (MS70) and S (PR70 CAM). (130) coins total. Includes (3) SMS70 1965-P // 1967-P.	EST	375-500	B
<b>Twenty Cent Pieces</b>				
64	1875-S Twenty Cent piece. Good.	EST	100-125	SE
<b>Standing Liberty Quarters</b>				
65	1924-D AU 53	EST	550-650	SE
66	(3) incl 1917 Type 1 (1) and 1926 (2). Condition G.	EST	75-105	SE
<b>Washington Quarters</b>				
67	(4) Diff AU/Unc incl 1932, 1936, 1937, 1938. ASW approx 0.72 ozt.	EST	90-120	SE
68	(77) Nearly complete set 1932 // 1964-D missing 1932-D. 1932-S, 1934-D, 1937-S, 1938 and 1955-D. Avg circulated coins. ASW approx 13.92 ozt.	EST	1,400-1,500	LE
69	(78) In almost complete set 1932-D // 1964-D missing only 1932, 1932-S, 1936-S, 1937-S & 1939-S. Some later dates Unc. Housed in (3) Whitman folders. ASW approx 14.10 ozt.	EST	1,200-1,400	BAG
70	(81) Diff in almost complete set 1932 // 1964-D missing only 1932-D & S. Mixed circulated condition. Housed in (3) Whitman folders. ASW approx 14.64 ozt.	EST	950-1,100	BAG
71	(81) Almost complete set of Washington Quarters 1932 // 1964-D missing only 1932 D & S and 1955-D. Typical circulation with later dates in better condition. Housed in Whitman Album #9418. ASW approx 14.64 ozt.	EST	1,000-1,250	BAG
72	(81) Diff in virtually complete set from 1932 // 1964-D missing only the 1932-D & 1932-S. Earlies avg circulation; later better with about half nice white uncirculated from 1941 onward. Housed in Whitman album #9418. Well worth inspection. ASW approx 14.64 ozt.	EST	950-1,200	BAG
73	(154) Complete set 1932 // 1990-S housed in Whitman album #7122 (cover detached). Early dates circulated but many coins AU/BU. Includes all S-Proofs post-1965. ASW approx 15.01 ozt.	EST	1,650-1,850	BAG
74	(61) Diff in complete set from 1941 // 1964-D all nice BU. Coins mostly white with a few lightly toned. Housed in Whitman album #9418. ASW approx 11.03 ozt.	EST	750-950	BAG
75	(40) AU/Unc. 1945 // 1964 (many dup) housed in 2x2s. ASW approx 7.23 ozt.	EST	550-650	LE
76	(104) Complete set 1965 // 1998-S housed in (2) Dansco albums #8140 & 8141. Almost all coins AU/BU/Proof. Incl Silver Proofs post-1991. Bonus: (16) Proof State Quarters	EST	400-450	L
<b>State Quarters</b>				
77	(11) 2009-S Silver ANACS PF70 DCAM incl. (3) American Samoa, (3) Guam, (2) Virgin Islands, (2) Puerto Rico and (1) Mariana Islands. Each coin Greysheets for \$25-30.	EST	275-325	B
78	(19) 2009-S Silver ANACS PF69 DCAM incl (2) American Samoa, (2) Guam, (3) Virgin Islands, (3) Puerto Rico, (4) Mariana Islands and (5) Wash DC. Each coin Greysheets for \$21.	EST	400-500	B
79	(20) State/NP Quarters incl (10) State Q Proof sets 1999 // 2008 in OGP, (8) Uncirculated NP Q sets (2 each 2010 // 2013) in OGP, incomplete Unc P or D set (44 coins) in Littleton folder and complete P or D set (50 coins) in Commercially prepared US map coin folder. FV approx \$56.	EST	90-100	L
80	Collection State and America the Beautiful NP Quarters in OGP or commercial packaging. All coins MS or Proof. State Q housed in commercial presentation cases. AB/NP Q housed in (125) OGP 3-coin sets in plastic sleeves containing P, D and S-Proof coins and (32) commercial plastic and cardboard packaging including P, D, Platinum-plated and Gold-plated pieces. FV approx \$200.	EST	250-350	L
<b>25c Groups / Collections</b>				
81	(6) Incl 1876 & 1877 Seated Quarters and 1892, 1897, 1908-O & 1912-P Barber Quarters. Condition AG-F. ASW approx 1.08 ozt.	EST	85-105	SE
<b>Bust Halves</b>				
82	1810 VF medium grey	EST	250-450	SE
83	1812 EF/AU cleaned	EST	500-675	SE
84	1813 O-105 VF, cleaned in the past with natural re-toning especially around the periphery.	EST	125-160	SE
85	1818 VF light grey	EST	200-250	SE
86	1819 VF+ light grey	EST	280-340	SE
87	1821 VF+ medium grey	EST	240-300	SE
88	1824/1 VF cleaned	EST	150-300	SE
89	1825 VF dark grey	EST	120-170	SE

LOT	U.S. COINS		VALUE	
90	1826 XF medium to dark grey	EST	165-240	SE
91	1827 Square base 2 AU+ dark grey	EST	350-450	SE
92	1830 Large 0 XF+ medium to dark grey	EST	190-245	SE
93	1831 VF medium to dark grey	EST	115-150	SE
94	1832 Small Letters O-110 VF+ light grey color.	EST	100-125	SE
95	1832 Small Letters O-111 VF+ medium-grey.	EST	100-125	SE
96	1833 O-104 near XF detail w/ a few marks, deeply toned.	EST	90-120	SE
97	1834 Large Date; Large Letters XF medium- grey	EST	165-210	SE
98	1834 Small Date; Small Letters O-117 AU	EST	210-250	SE
99	1838 Reeded Edge AU. A little roughness on the planchet o/w nice original color.	EST	300-400	SE
<b>Barber Halves</b>				
100	(6) incl 1898, 1899, 1908-O, 1916 & 1916-D (2). AG-VG. ASW approx 2.17 ozt.	EST	95-135	SE
101	(4) Diff incl 1900, 1902, 1909-S & 1912. AG-VG. ASW approx 1.44 ozt.	EST	150-180	SE
102	(24) Barber Halves. Duplicates & most G-VG. ASW approx 8.68 ozt.	EST	650-750	BAG
103	(72) Diff in a complete set 1892 // 1915-S missing only the 1898-O. Mostly originals AG to VG with semi-keys all AG except 1896-S (G), 1913 (G), 1914 (G), & 1915 (G+ with obverse scratches). Housed in a Whitman #9124 album. Several nice coins in the set - be sure to inspect.	EST	1,800-2,100	BAG
<b>Walking Liberty Halves</b>				
104	(7) Circulated 1917 // 1937 in Whitman deluxe album. ASW approx 2.53 ozt.	EST	94-115	A
105	(4) Diff incl 1935 AU58, 1936 AU58, 1938 MS60+ and 1939-D MS63. All white and attractive.	EST	230-280	SE
106	(44) Almost complete set 1916 // 1940-S missing only 1921-D. Housed in Whitman album #9423. Circulated condition G-VG. ASW approx 15.91 ozt.	EST	1,150-1,500	BAG
107	(65) Complete set 1916 // 1947D. Most G-VG. Housed in old Harco Coinmaster album. All coins exhibit green patina primarily around edges due to plastic coin sleeves. ASW approx 23.51 ozt.	EST	1,900-2,250	BAG
108	(65) Complete set 1916 // 1947-D housed in Dansco album #7160. Circulated 1921 ANACS G4 & 1921-D PCGS AG03. ASW approx 23.51 ozt.	EST	2,500-2,750	BAG
109	(42) Diff in a partial set 1917 // 1947-D. Avg circ. Housed in (2) Whitman folders #9021 and 9027. ASW approx 15.19 ozt.	EST	1,400-1,600	BAG
110	(29) Diff in almost complete set 1937 // 1947-D missing only 1938-D. Mixed circulated condition. Housed in single Whitman folder #9027. ASW approx 10.48 ozt.	EST	650-700	SE
<b>Franklin Halves</b>				
111	1958 PCGS MS66	EST	90-100	BAG
112	(4) Cameo Proofs incl 1960, 1961, 1962 and 1963.	EST	180-260	SE
113	(35) Complete set 1948 // 1963-D. Most G-VG. Housed in old Harco Coinmaster album. All coins exhibit green patina primarily around edges due to plastic coin sleeves. ASW approx 12.66 ozt.	EST	850-1,050	BAG
114	(35) Diff Franklin Half Dollars in a complete set 1948 to 1963-D & a 1964 Kennedy. Avg circ with several later dates AU/Unc. Housed in a LOC Album #21. ASW=13.02 Ozt.	EST	1,200-1,400	BAG
115	(35) Complete set 1948 // 1963-D housed in Dansco album #7165. Most circulated with several AU/Unc. ASW approx 12.66 ozt.	EST	1,200-1,400	BAG
116	(35) Complete set 1948 // 1963-D housed in Whitman album #9126. Circulated. ASW approx 12.66 ozt.	EST	1,200-1,400	BAG
117	(35) Complete set 1948 // 1963-D housed in Whitman album #9126. Most coins are AU/Unc. ASW approx 12.66 ozt.	EST	1,300-1,500	LE
<b>Kennedy Halves</b>				
118	2006 6-coin set incl Unc P (2) and D (2), S-Proof, & silver S-Proof. Housed in cardboard presentation case. ASW approx .36 ozt.	EST	70-80	BAG
119	(3) 2018-S NGC PR70 Silver Kennedy halves "light finish - early release" with SF Trolley label.	EST	240-270	SE
120	(3) 2019-S NGC PF70 Ultra Cameo Silver Kennedy Halves FDOI with Kennedy label.	EST	120-150	SE
121	(20) 1964 AU/Unc housed in 2x2s. ASW approx 7.23 ozt.	EST	550-650	LE
122	(22) Diff in a complete set 1964 // 1979 housed in a Whitman folder #9699. All coins AU/Unc. ASW approx 1.46 ozt.	EST	150-200	SE
123	(30) Complete set (one coin from each year) from 1964 // 1994. "30th Anniversary Collection" by UPM. ASW approx 1.24 ozt. Housed in Cherrywood presentation case (worn).	EST	125-175	L
124	(40) Collection 1964 // 1992 incl several silver coins and a few clad proofs. Nearly all AU/Unc. Housed in Whitman album #9127. ASW approx. 1.10 ozt.	EST	150-175	BAG

LOT	U.S. COINS	EST	VALUE	
125	Collection of Kennedy Halves contained within a PCS JFK 100th Anniversary Coin, Stamp, and Medal Commemorative set and the PCS JFK Unc Coin set which includes P&D coins from 1974, 1976, 1978, 1979, 1981, 1985, 1995 // 1999, 2000 // 2006. Each year is housed with a brief description of a significant event in JFK's life with an accompanying post-marked stamp. Also includes (4) silver coins from 1966 // 1969. FV=\$19. ASW = 0.59 ozt.	EST	65-75	L
<b>Morgan Dollars</b>				
126	1881-S S/S VAM8A MS61 PL! Very Attractive!	EST	150-200	SE
127	1898-O NGC MS65	EST	140-150	BAG
128	(6) incl 1884, 1886, 1891-S, 1900-O & (2) 1921. Condition varies G-Unc. ASW approx 4.64 ozt.	EST	460-500	SE
<b>Peace Dollars</b>				
129	1922 NGC MS63	EST	55-60	BAG
130	(5) Circ Peace Dollars incl: 1922 (3) 1924 & 1927-S. ASW approx 3.86 ozt.	EST	180-220	SE
131	(7) 1922-D // 1934-D incl 1922-D SEGS MS62. Cleaned/scratched but VF-AU. ASW approx 5.41 ozt.	EST	390-420	BAG
132	(20) 1922-D // 1935-S, F or Better. Many dipped/cleaned/polished. Inspect! ASW approx 15.47 ozt.	EST	1,100-1,250	HWC-ROLL
<b>Mixed Morgan &amp; Peace Dollars</b>				
133	(5) Diff incl 1879 & 1921 Morgan and 1922, 1923 & 1924 Peace dollars. ASW approx 3.86 ozt.	EST	425-500	SE
134	(26) Diff incl 1878-S, 1880-S, 1881-S, 1882, 1883-O, 1884, 1885-O, 1886, 1887, 1888, 1889, 1890, 1896, 1897, 1898, 1899-O, 1900, 1901-O, 1902-O, 1904-O, & 1921 Morgans and 1922 // 1925 & 1926-S Peace. All PCS slabbed and housed in cherry wood presentation case. All appear AU/BU. ASW approx 20.11 ozt.	EST	2,500-3,000	L
<b>Eisenhower Dollars</b>				
135	(12) Unc 40% Silver Ike dollars. (3) each 1971 // 1974. ASW approx 3.79 ozt.	EST	325-375	BAG
136	(15) Silver Ikes incl Brown 1971 (2) & 1972 (2) and Blue 1971 (5), 1972 (3) and 1973 (3). All OGP. ASW approx 4.74 ozt.	EST	525-600	B
137	(2) Complete 11-Proof coin sets (clad and silver) 1971-S // 1978-S PCGS PR69 DCAM.	EST	700-900	L
138	(27) Diff in almost complete set 1971 // 1978-S missing only the (5) S-Proof 40% silver coins (1971 // 1976). Housed in Whitman album #9131.	EST	150-200	BAG
139	(29) Diff in almost complete set 1971 // 1978-S missing only 1971-S silver Proof, 1976-S clad Type I and 1978-S clad Proof. Housed in Dansco Album.	EST	240-280	BAG
140	(24) Silver Proof Ike \$1 1971-S // 1974-S incl (11) in Brown Box OGP, plus an additional (13) lacking the brown box. Incl a total of (5) dated 1973-S mentioned due to the slightly higher value of this issue. ASW approx 7.58 ozt.	EST	550-600	B
141	(28) Blue Envelope comprised of (7) of each date 1971-S // 1974-S all in OGP. ASW approx 8.85 ozt.	EST	630-700	B
142	(14) Blue Ike Dollars incl 1972 (5), 1973 (7), 1974 (2). All OGP. ASW approx 4.43 ozt.	EST	315-350	B
143	(6) Rolls of (20) Unc Ikes incl. 1971, 1972, 1974, 1976 Type II, 1977 & 1978.	EST	120-160	B
<b>SBA / Sacagawea Dollars</b>				
144	(44) SBA Dollars including 18-coin complete set 1979-P // 1999-P Proof housed in Dansco album #8180. Duplicates incl several additional proofs housed in Littleton & Whitman albums. Please inspect.	EST	150-200	L
145	(78) SBA Dollar accum incl (2) 1979 Souvenir sets, (2) 1980 Souvenir sets, 1999 Unc set, (7) commercially prepared coin sets & (7) gold-plated coins.	EST	78-100	B
146	(48) Diff 2000-P // 2015-S housed in Dansco album #8183. Includes S-Proof for each year.	EST	150-175	BAG
<b>Presidential Dollars</b>				
147	(14) Presidential P and D Uncirculated Dollar sets. (2) each 2010 // 2016. All in OGP (6 still in shrink wrap). FV=\$108.	EST	110-125	B
148	(63) Certified Presidential \$1 incl complete set 2007-S (G. Washington) // 2016-S (R. Reagan) made up of (8) ICG PR70 DCAM & (31) ANACS PR70 DCAM coins and additionally (24) ANACS PF69 DCAM 2009-S (6 each Polk, Taylor, Tyler, Harrison). PR70 coins Greysheet from \$30-40 each. Similar PR70 sets are going for \$1,500 online.	EST	1,200-1,500	B
<b>U.S. GOLD</b>				
<b>\$1 Gold</b>				
149	1853 \$1 Gold Liberty Type-1 NGC AU58.	EST	375-500	SE
<b>\$2 1/2 Gold</b>				
150	1906 Coronet Head NGC MS62	EST	625-725	SE
151	1914-D Indian AU	EST	650-850	SE
152	1929 Indian ANACS MS62	EST	625-750	SE
<b>\$5 Gold</b>				
153	1915 \$5 Gold Indian NGC MS62	EST	1,450-1,750	SE

LOT	U.S. TYPES	EST	VALUE	
154	(38) Type coins incl Large Cents, Small Cents, Two-cent pieces, Three-cent nickels, nickels, dimes and quarters. Almost all have problems. Please inspect!	EST	40-50	BAG
155	(246) In a nearly complete set 1965 // 2008. Missing only 1969, 1969-D, 1970, 1971, 1976-D. Earlier dates circulated. State quarters Unc and include duplicates. Housed in (5) New Whitman folders (#9040, 8111, 8112, 9697, 9038) and (1) Album (#9176). FV = \$61.50.	EST	70-100	B
156	(4) Seated Types incl 1856 Half-dime, (2) 1853 Arrows & Rays Quarters, 1866 with Motto Half-dollar. AG-G. Please inspect.	EST	100-150	SE
157	Calhoun's Collectors Society US Silver Mint Coin Collection incl 1943 Jefferson War Nickel (35% fine), 1955 Washington Quarter, 1943 Mercury Dime, 1955 RSVLT Dime, 1955 Franklin half, 1964 and 1965 (40% fine) Kennedy halves and 1976 S-Proof Bicentennial Wash quarter, Kennedy half and Ike dollar (40% fine). All coins in Unc condition. ASW approx 1.8 oz. Housed in attractive presentation case with accompanying papers.	EST	110-125	LE
158	(31) US Type coins from Large Cents to Liberty "V" Nickels. Incl Large Cent, (18) Flying Eagle / Indian Cents C-N & Bronze (1868 & 1873 seen), Two Cent, (7) Three Cent Nickels, (2) Seated Half Dimes, (2) NC Liberty "V" Nickels. VG/AU+ all w/ issues.	EST	150-175	BAG
159	PCS Complete Denver Mint Silver Coin Collection incl Morgan and Peace Dollars, Barber, Walking, Franklin & Kennedy Halves, Barber, Standing & Washington Quarters, Mercury, Barber & RSVLT Dimes. Housed in cherry wood presentation case. (12) coins total. Coins are circulated. ASW approx 5.05 oz.	EST	350-450	B
160	(22) In a complete 20th Century Type Set including pennies (I, L), nickels (L, B, J), dimes (B, M, R), halves (B, L, F) and dollars (M, P). Housed in Whitman folder #9046. ASW approx 4.0 oz.	EST	350-450	SE
161	(17) Year Sets in DIY plastic holders 1918, 1919, 1937, 1938 (2), 1940, 1944, 1964 (4), 1968, 1972, 1974, 1978, & 1983 (2). Condition varies but several AU/ MS sets noted. Clad FV approx \$8.46. ASW approx 6.78 oz.	EST	475-650	B

## CLASSIC COMMEMS

### Classic Commems Silver

162	(4) Diff Commems incl: 1893 Columbian Half Dollar, 1925 Stone Mountain Half Dollar, 1982 Washington Half Dollar & 2006 Franklin Founding Father Dollar.	EST	90-115	SE
163	(9) 1893 Columbian Silver half-dollars. G-XF. Some cleaned in the past. Overall attractive lot. Please inspect.	EST	200-250	BAG
164	Columbian Halves Roll (20 coins) mixed circ grades but most XF to AU originals. (4) are 1892, the rest 1893.	EST	500-550	HWC-ROLL

## MODERN COMMEMS

165	1983-1984 US Olympics Gold & Silver Proof Commemorative 3-Coin Set incl \$10 gold coin, (2) \$1 silver coins. In OGP with COAs. AGW 0.4838 oz. ASW 1.546 oz.	EST	2,500-2,700	SE
166	Olympic 1988 4-coin Proof & Unc set in original Mint wooden box, incl (2) \$5 Gold & (2) \$1 Silver. AGW= 0.5374 oz. ASW=1.7188 oz.	EST	2,500-2,700	HWC-B
167	1989 Congressional Gold and Silver 3-Coin Proof Set incl \$5.00 Gold coin, \$1 Silver coin & Half-dollar clad coin. This set was issued to mark the 200th anniversary of the operation of Congress under the U.S. Constitution. OGP with COA. AGW .2419 oz. ASW .7734 oz.	EST	1,150-1,350	SE
168	1989 Congressional Gold and Silver 3-Coin Proof Set incl. \$5.00 Gold coin, \$1 Silver coin & Half-dollar clad coin. This set was issued to mark the 200th anniversary of the operation of Congress under the U.S. Constitution. OGP with COA. AGW .2419 oz. ASW .7734 oz.	EST	1,150-1,350	SE
169	1989 Congressional Gold and Silver 6-Coin Proof & Uncirculated Set incl (2) \$5.00 Gold coins, (2) \$1 Silver coins & (2) Half-dollar clad coins. This set was issued to mark the 200th anniversary of the operation of Congress under the U.S. Constitution. OGP in wooden box with COA. AGW 0.4838 oz. ASW 1.5468 oz.	EST	2,500-2,750	B
170	(6) 1982-S George Washington Silver Commemorative Half-Dollars Proof (5) & Uncirculated (1). All 0.9 Fine. ASW 2.17oz. All housed in OGP (worn) with COA.	EST	125-150	BAG
171	(6) 1982-D Washington Unc Commemorative Silver Half Dollars individually packed in plastic. ASW=2.17oz.	EST	130-150	BAG
172	(2) Silver Proof Commemorative sets incl 1983-1984 Olympic 2-piece dollar set & 1988-S Olympic dollar. Both housed in OGP. The 1983-1984 set packaging is worn and missing the COA.	EST	130-150	B
173	(4) 1986 SOL Commemorative Silver Dollars incl Uncirculated (P) and (3) Proof (S). OGP with COAs. Two of the Proof dollars are housed in original 2-coin packaging both missing half-dollar. ASW= 3.08 oz.	EST	185-200	B
174	(4) 1986 Statue of Liberty Silver Proofs incl (2) SOL 2-Piece sets and (2) individual dollar Proofs (one in a blue felt-lined presentation case, the other in a plastic capsule).	EST	160-200	B
175	(5) Commemorative coins incl 1986-S 2-Piece Statue of Liberty coin set (Proof Silver Dollar and Proof Clad Half-Dollar), 1992-S Columbus Proof Silver Half-Dollar, 1995-S Civil War Proof Silver Dollar, & 2006-S San Fran Old Mint Uncirculated Silver Dollar. CW coin is in Littleton packaging, the rest are in OGP.	EST	160-180	B
176	1987 (4) Constitution \$1 PROOF in OGP.	EST	150-200	B
177	(5) Diff Silver Proof Commemorative dollars incl 1987-S US Constitution, 1990-P Eisenhower, 1991-S Mt. Rushmore, 1991-P Korean War, & 2005-P John Marshall. All in OGP. US Constitution outer slip cover heavily worn and missing COA.	EST	235-250	B

LOT	MODERN COMMEMS		VALUE	
178	(5) 1987 US Constitution Commemorative Silver dollars incl. (4) S-Proof (2 housed in OGP with COA, 2 housed in presentation cases) and (1) P-uncirculated.	EST	225-250	B
179	(2) 1988-S Olympic Silver Coins. Housed in OGP. One set has damaged packaging and is missing COA. ASW=1.5469 ozt.	EST	95-125	BAG
180	(4) Commemorative Silver Dollars incl. 1991 Korean War D-Unc (3) and 2002 US Military Academy Bicentennial W-Proof. All in OGP with COA.	EST	200-225	B
181	(4) Commemorative coins incl 1992 Olympics two-piece S-Proof Silver Dollar (Baseball) and S-Proof Clad Half-Dollar (Gymnastics), 1992 S- Proof Clad Half-Dollar(Gymnastics), & 2004 Lewis & Clark Bicentennial Proof-P Silver Dollar. Bonus: 1999 SBA Dollar Proof-P. All in OGP with COA.	EST	110-120	B
182	(2) 1998-S Commemorative sets incl RFK Silver Proof dollar & 2 piece Kennedy Collector's Set which contains Unc RFK Silver dollar and JFK Matte finish silver half-dollar. Both housed in OGP with COAs.	EST	170-200	B
183	(2) 2004 Thomas Edison Proof- P Commemorative Silver Dollars. Both in OGP with COA.	EST	90-100	B
184	(2) 2009-P Abraham Lincoln Proof Silver Dollars. Housed in OGP with COA. ASW= 1.5470	EST	105-125	BAG
185	(2) 2012 W Infantry Soldier Proof Silver Dollar "Defenders Of Freedom" Set w/ Dog tags in OGP.	EST	120-150	LE
186	(2) 2019-S Apollo 11 Half Dollars NGC PF70 Ultra Cameo	EST	90-100	SE

## MODERN AMERICAN EAGLES

### Silver Eagles

187	1986 1st year PROOF Silver Eagle in Original Mint box w/ COA.	EST	84-100	BAG
188	1986 ASE NGC MS69 FYOI	EST	70-90	BAG
189	(2) 1987 - (S) ASE ANACS MS69 Struck at the SF Mint.	EST	180-200	SE
190	2012-S 2-Proof coin (75th Anniversary SF Mint) set. Both silver (P/RP) coins are ANACS PR69 DCAM. Housed in OGP with COA.	EST	180-240	B
191	(3) 2020 - (P) ICG MS69 Minted at Philadelphia "Emergency Issue"	EST	240-260	SE
192	(2) 2021 ASE ANACS MS70 FDOI Type 1 and Type 2. Both coins housed in individual cherry wood presentation cases.	EST	165-180	B
193	(3) 2021 ASE ANACS MS70 "New Years Edition - A first Strike Coin"	EST	240-270	SE
194	(22) Diff NGC PF69 Ultra Cameo in complete set 1986 // 2007.	EST	1,900-2,100	B
195	(25) Diff NGC MS69 in complete set 1986 // 2010. 25th Anniversary set 648 of 1500.	EST	1,900-2,100	B
196	(7) Silver Eagles in Littleton plastic holders incl 1987, 1991, 1993, 1994, 1999 & 2000 (2).	EST	770-850	BAG
197	(2) Proof ASE incl 1988 and 1989, both housed in individual purple felt-lined presentation cases.	EST	120-150	SE
198	(8) "Colorized" ASE incl Gold-plated 2018, Rainbow-toned 2018, Liberty "Draped in American Flag" 1999 (2), 2000 (3) and Twin Towers 2001. Each is housed in its own presentation case. Bonus: Elvis portrait on Tennessee State Quarter.	EST	640-720	B
199	(5) W Proof ASE incl 2001, 2002, 2003, 2006 & 2007. All housed in blue felt-lined presentation cases.	EST	390-420	B
200	(7) ANACS Certified incl 2007-W PF66 DCAM (2), 2008-W PF69 DCAM, 2010-W PF68 & PF69 DCAM, 2012-W PF69 & PF70 DCAM.	EST	500-600	B
201	(4) 2013-W 75th Anniversary West Point 2-coin MS/Proof silver coin set. In OGP with COA.	EST	900-1,000	B
202	(5) NGC MS70 incl (2) 2020 and (3) 2021 Type I Early Release all with Trump labels.	EST	400-450	BAG

### Gold Eagles

203	2006 One-Tenth Ounce \$5 Gold Eagle NGC MS 69.	EST	500-600	SE
204	2016 One-Tenth Ounce Gold Eagle GEM BU (0.1 ozt. AGW)	EST	460-550	SE
205	1989 One-Quarter Ounce Proof \$10 Gold Eagle in OGP.	EST	1,275-1,475	SE
206	2024 One-Quarter Ounce \$10 Gold Eagle NGC MS 70	EST	1,275-1,475	SE
207	2018 One-Half Ounce \$25 Gold Eagle NGC MS69	EST	2,550-2,700	SE
208	1992 One-Ounce \$50 Proof Gold Eagle in OGP.	EST	5,100-5,500	SE
209	1988 4-Coin Proof Set incl Ounce, Half-Ounce, Quarter-Ounce and Tenth-Ounce in OGP. AGW=1.85 ozt.	EST	8,500-9,000	B

## SILVER COINS

### Silver War Nickels

210	(50) Silver War Nickels mixed years and mint marks. Circulated. ASW approx 2.81 ozt.	EST	170-180	BAG
211	(82) Silver War Nickels mixed years and mint marks. Circulated. Housed as incomplete or complete sets in individual cardboard holders with plastic sleeves. ASW approx 4.61 ozt.	EST	280-325	BAG
212	(86) Silver War Nickels mixed years and mint marks. Circulated. ASW approx 4.84 ozt.	EST	175-350	BAG
213	(100) Silver War Nickels mixed years and mint marks. Circulated. ASW approx 3.62 ozt.	EST	340-360	BAG

### 40% Silver

214	\$25 face 1965 // 1969-D most avg circ.	EST	1,300-1,500	BAG
215	\$35 face 1965 // 1969-D most avg circ, some Unc.	EST	1,800-2,000	BAG

LOT	SILVER COINS	EST	VALUE	
216	\$50 face 1965 // 1969-D most avg circ.	EST	2,600-3,000	BAG
<b>90% Silver</b>				
217	\$5 face Roosevelt Dimes avg circ.	EST	330-350	SE
218	\$10 face Roosevelt Dimes avg circ.	EST	550-650	BAG
219	\$15 face Dimes all Roosevelt avg circ in 2x2s.	EST	775-850	B
220	\$26.50 face Mercury Dimes avg circ.	EST	1,400-1,600	BAG
221	\$30 face Dimes Merc & Roosevelt avg circ in 2x2s.	EST	1,550-1,750	B
222	\$35 face Roosevelt Dimes avg circ.	EST	1,500-1,700	BAG
223	\$30 face Washington Quarters avg circ.	EST	1,300-1,500	BAG
224	\$35 face Quarters all Washington avg circ.	EST	1,800-2,000	BAG
225	\$50 face Quarters all Washington avg circ in 2x2s.	EST	2,600-3,000	B
226	\$30 face Walking and Franklin Halves.	EST	1,500-1,600	BAG
227	\$40 face Halves avg circ, WL, Franklin & Kennedy mixed.	EST	2,000-2,200	BAG
228	\$50 face Walking Liberty Halves avg circ.	EST	2,200-2,500	B
229	\$50 face Halves avg circ, WL, Franklin & Kennedy mixed.	EST	2,600-3,000	BAG
230	\$4.95 face incl dimes, quarters, & halves. Avg circ.	EST	440-500	BAG
231	\$8.20 face incl Morgan/Peace dollars, Walker halves, Barber/Wash quarters, and Merc/RSVLT dimes. Avg circulation.	EST	725-800	BAG
232	\$14.50 face. Mixed lot incl Mercury and RSVLT dimes, Wash quarters, Walking, Franklin & Kennedy Halves. All IDed, housed in flips and 2x2s. Coins housed in old flips have some green toning on edges.	EST	690-750	L
233	\$22 face incl Franklin Halves, Washington Quarters and Mercury Dimes housed in 2x2s. Better than average circulated condition.	EST	1,300-1,500	LE
234	\$37.50 face. Mixed lot of mostly Mercury and Roosevelt dimes but also incl several Standing Liberty quarters and Kennedy halves.	EST	1,800-2,000	B

## SILVER & GOLD BARS/INGOTS/ROUNDS

### Silver Bars & Rounds

235	(2) 1000 grain Franklin Mint Sterling (.925) silver bars housed in individual felt bags and cardboard boxes. ASW approx 3.85 ozt.	EST	425-475	SE
236	(3) Silver 1 ozt Bars.	EST	200-240	SE
237	(6) Small "gift size" silver bars and rounds (.999 fine). ASW = 82 grams or approx. 2.63 ozt.	EST	275-350	SE
238	(9) Diff incl (5) Sterling Proofs ASW 3.92 ozt and (4) 1 oz .999 Fine ASW 4.0ozt.	EST	500-600	BAG
239	(12) Silver (0.9 to .999 fine) Rounds most on First Day Covers (FDC). Total ASW approx 6.2 ozt. Bonus: (7) 1986 SOL Unc commemorative half dollars on FDC plus (3) 1979 SBA Unc dollars on FDOI covers.	EST	450-500	L
240	(44) 1 oz Sterling Silver Rounds on postal covers (Westport Collector's Society). ASW= 40.7 ozt.	EST	3,000-3,200	B

## U.S. MINT SETS & PROOF SETS

### Mint Sets

241	2017-S Enhanced Uncirculated coin set ANACS EU70. Struck in celebration of the Mint's 225th anniversary, this set contains (10) coins (P, N, D, State Q (5), Kennedy half, and SAC dollar) with an enhanced uncirculated finish featuring a combination of laser-frosted areas and an unpolished field that accentuates design details.	EST	150-200	L
242	(8) Unc Year Sets 1963 (4) and 1964 (4) packaged in Capital holders. ASW approx 4.92 ozt.	EST	325-400	B
243	(15) Special Mint Sets (5) each 1965-1967 in OGP with packaging wear as would be expected after 60 years.	EST	140-150	B
244	(20) Collection Mint Sets incl 1965 SMS, 1974 (2), 1977 (3), 1988 (2), 1989 (2), 1991 & 1992 all in OGP. Also incl 1983 "Numismatic News" produced mint set and (7) DIY mint sets in plastic holders. ASW approx 2.28 ozt.	EST	375-425	B
245	(43) Diff in a straight run 1965 // 2008 plus the 3-pc Bicentennial silver set all in OGP.	EST	240-280	OVERSIZE
246	(20) Special Mint Sets (10) each 1966 & 1967 in OGP with packaging wear as would be expected after 60 years.	EST	180-190	B
247	(14) Complete collection Mint sets 1968 // 1981. All in OGP.	EST	110-130	B
248	(26) Mint Sets incl 1968-81, 1984-85, 1987-91, 1998-2002. All in OGP.	EST	175-200	B
249	(10) Bicentennial Proof sets incl (3) 1975 Mint sets (5) 1976 Mint sets and (2) 1976 3-Piece Silver (40%) Mint sets. All in OGP.	EST	140-160	B
250	(13) Sets in a straight run 1999 // 2011 all in OGP.	EST	130-160	B
251	(14) Westward Journey Nickel Mint sets incl 2004 (2), 2005 (7) & 2006 (5). 2004 sets contain P, D and S-Proof coins. 2005 and 2006 contain (2 each) P, D and S-proof coins. OGP with COA.	EST	56-70	B
252	(12) P and D Uncirculated Mint sets incl. 2006, 2007 (2), 2009, 2011, 2013 // 2017 (2) & 2019. All in OGP. Bonus: One additional collection of 2015 Denver coins.	EST	250-275	B

LOT	U.S. MINT SETS & PROOF SETS		VALUE	
253	(7) P and D Mint sets incl 2009, 2011 (3), 2014, 2015 & 2017. All in OGP.	EST	130-150	B
<b>Proof Sets</b>				
254	1991 Prestige Proof set in OGP.	EST	66-80	B
255	1992-S Prestige Proof Set. (6) coins incl Olympic clad half dollar and silver dollar. OGP with COA.	EST	85-110	B
256	(4) Diff Proof sets 1956, 1957, 1959 & 1964 individually housed in Capital proof set holders.	EST	175-200	B
257	(11) Complete set 1968-78. OGP's in very good condition.	EST	90-100	B
258	(4) Bicentennial Silver Coin sets incl. 1976 3-Piece Silver (40% Fine, ASW=0.5380, FV=\$1.75: IKE, Kennedy, Wash Q) S-Proof set (3) and a 1976 Franklin Mint Bicentennial Sterling Silver Proof Medal. All in OGP or original commercial packaging.	EST	120-140	B
259	(5) 1976-S 3-piece Silver Bicentennial Proof sets in OGP. One set missing COA. ASW approx 2.69 ozt.	EST	150-175	B
260	(8) Bicentennial Proof sets incl (5) 1976 Proof sets and (3) 1976 3-Piece Silver (40%) Proof sets. All in OGP.	EST	180-200	B
261	(10) 1976-S Silver 3-Piece Sets in original caches.	EST	350-380	B
262	(20) Complete set 1979-98. OGP's in excellent condition.	EST	140-160	B
263	(2) 1999 Silver 9-piece Proof sets in OGP.	EST	300-400	BAG
264	(10) Proof sets 1999-2008 in OGP.	EST	120-140	B
265	(10) Proof sets incl 1999 9-piece (2), 1999 5-piece Quarter (2), 2000 10-piece (3) and 2000 5-piece Quarter (3). All in OGP.	EST	70-80	B
266	(11) Silver Proof sets incl (1) 2000, (2) 2007, (5) 2008 & (3) 2010. The 2000 is a 10-coin set, the others are 14-coin sets. All in OGP.	EST	1,500-1,800	B
267	(16) State Quarters Silver S Proof Sets incl 2004 (3), 2005 (5), 2006 (3), 2007 (1) & 2008 (4). OGP with COA. ASW=14.4ozt.	EST	750-900	B
268	(11) 2007 14-Coin Proof Sets in OGP.	EST	110-150	B
269	(5) Proof sets 2009-13 in OGP.	EST	175-195	B
270	(15) incl 2010 (2), 2011 (3), 2012, 2013 (6) & 2014 (3). All in OGP.	EST	450-500	L
271	(3) Modern SILVER Proof sets in OGP: 2011, 2014 & 2018 Reverse Proof (Jan Greysheet \$229.92)	EST	180-200	B
272	(11) Silver Proof sets incl (3) 2011, (3) 2012, (3) 2013 and (2) 2016. All in OGP.	EST	1,350-1,650	B
273	(5) Proof sets 2013-17 in OGP.	EST	175-190	B
274	(5) Proof sets 2017-21 in OGP.	EST	220-240	B
<b>Mint Sets / Proof Sets</b>				
275	(24) Accumulation of Mint and Proof sets in OGP or commercially repackaged incl Mint 1962, 1963 (2), 1964, 1970-P, 1971-S Ike, 1972-D, 1974-P, 1976, 1976 (3-piece silver), 1981-P, 1984-D, 2010 & 2015-D sets and Proof 1960-62, 1972, 1981 (2), 1976, 1976 (3-piece silver) & 2005 (2). 40% silver FV approx \$4.50. 90% silver FV approx \$9.35. ASW approx. 7.17 ozt.	EST	525-625	B
276	(4) Silver 5-coin Year sets incl 1963 (2) and 1964 (2) housed in Whitman plastic holders.	EST	300-350	SE
277	1987 Proof (10) & Mint (4) sets in OGP.	EST	74-90	B
278	Collection Mint and Proof Sets incl 1996, 1997, 1998, 1999 (2), 2000, 2001, & 2002 mint sets, 2000 Proof set & 2003-04 State Quarter Mint sets. All in OGP.	EST	75-90	B
<b>HARD TIMES/CIVIL WAR ERA</b>				
<b>Love Tokens</b>				
279	(10) Artistically altered coins - Love Tokens incl seated dimes (5), seated quarters (2), two cent pieces (2) and a wheat penny. Take a look!	EST	60-70	BAG
<b>MEDALS &amp; TOKENS</b>				
<b>Medals</b>				
280	Great Britain 1990 silver proof commemorative medallion 50th anniversary of the Battle of Britain, produced by Royal Mint in original holder w/ paper; 50mm, 53.30 grams sterling silver (abt 1.5 ozt ASW).	EST	125-150	B
281	Vatican City (4) souvenir medals; 2003 official medal Totus Tuus w/ Arms & Nativity Scene, 60mm gold-plated brass; 2005 Pope John Paul II French 38mm sterling silver medal; (2) large artwork medals, silver plated & colorized, abt 69mm, 2008 Sistene Chapel "Creation of Man" and 2012 Madonna of Foligno; all Unc.	EST	140-180	B
282	(20) Collection of pewter "America's First Medals" honoring Revolutionary War heroes incl G. Washington, Horatio Gates, Anthony Wayne, De Fleury, Nathaniel Greene (2), John Paul Jones (2), John E. Howard (3), William Washington (3), Daniel Morgan (3) and Henry Lee (3). All in OGP. Lot also includes 1990 Gen. Eisenhower Commemorative silver dollar ASW=0.77 ozt. in OGP.	EST	150-175	B
283	(3) 2013 Theodore Roosevelt Coin and Chronicles Sets in OGP with COA. This special collectible set contains (1) proof Theodore Roosevelt Presidential \$1 coin, (1) Theodore Roosevelt Presidential medal struck in .999 fine silver (first time in United States Mint history), & (1) 1.5" National Wildlife Refuge System Centennial Bronze medal. The set also includes a print honoring President Roosevelt's military service and a booklet with rich educational information about the 26th President of the United States, highlighting his legacy as a soldier, statesman and conservationist. Original sale price from the Mint was \$173 each.	EST	300-450	B

LOT	MEDALS & TOKENS	EST	VALUE	
284	(10) Collection of Bicentennial Medals incl 1974 John Adams (1 ozt Sterling), & (2) National Bicentennial Medals (each 1 ozt Sterling) one in OGP the other in a flip with signs of wear and tarnishing. Also incl are (7) bronze FDOI Bicentennial Medals (Committees of Correspondence, G. Washington, Lexington-Concord, John Adams, Paul Revere, & (2) T. Jefferson) all in OGP.	EST	300-350	B
285	(8) Diff US Bicentennial (3) and Franklin Mint (5) Sterling silver medals. ASW approx 4.4 ozt.	EST	440-480	B
<b>Tokens</b>				
286	1794 Talbot, Allum & Lee Cent (FULD-2/W-8570/Lettered Edge). VF. These tokens were made in England at the request of the New York firm of Talbot, Allum & Lee for use as One Cent pieces in their business. The Talbot, Allum & Lee Cents belong to a series of tokens known, collectively, as Conder Tokens (named after James Conder, who compiled a listing of the several thousand types and varieties). Perhaps the most curious association with regular U.S. coins is that many of the 1795 TAL cents were cut down, then used as planchets for Half Cents in 1795 and 1797. On many such coins, much of the original undertype is still visible on one or both sides of the Half Cents.	EST	425-500	SE
<b>Franklin Mint &amp; Related</b>				
287	Nice set of (5) proof Franklin Mint medals dated 1966, each representing a metal used by the company, using their terminology; sterling-klad, Franklin nickel-bronze, Franklin nickel silver, Franklin nickel-brass and Frankinium II; in octagonal holders in case w/ paper (light damage to outer case)	EST	80-100	L
288	"Salute to Ike" in original holder, two medals produced by Franklin Mint c.1969 for International Numismatic Agency, one medal as General, 2nd as President, both 24k gold plated fine silver, smaller than Ike dollar but larger than half dollar; some natural tarnish	EST	110-130	B
289	Accum (35) silver-plated copper medals & coin replicas, produced by American Mint, in original plastic flips w/ papers; almost all are 40mm, topics incl presidents & American history, Indians, replica coins, popes, baseball & more; several have some colorizing, a couple w/ a bit of gold-plate as well; two are actually 70mm coins, Ghana 1c 2013 for British Royal Baby (KM# 50); (2) are replica Widow's Mite w/ spot gold and an encapsulated actual Roman coin; interesting & topical.	EST	140-180	B
290	Franklin Mint 1982 The World War II Commemorative Proof Set of the South Pacific, boxed set of (3) sterling silver commems, Papua New Guinea 5 kina, Philippines 50 piso and Solomon Islands \$5; total ASW 2.4969 ozt. in original box w/ papers.	EST	200-250	B
291	Accum (77) medals & coin replicas from American Mint, all are gold-plated copper in several sizes from 33mm to 70mm diameter; in original plastic flips w/ papers, topics incl baseball, replica Confederate currency, replica classic US coins, presidents, Civil War, Indian chiefs and more; a few colorized, at least one has a bit of platinum as well; with gold at \$5K maybe it's worth scraping it off these collectibles! bonus (4) tiny tubes full of gold flakes.	EST	200-300	B
292	Franklin Mint "The Centennial Car Mini-Ingot Collection" (100) ingots in wooden display case; Issued 1973-78 with total of 5 ozt ASW	EST	300-350	L
293	Delaware Southern New Jersey Commemorative Medals, produced 1969-74 by Lombardo Mint, (11) diff 39mm medals, each in (3) versions, .999 silver, bronze and aluminum, all proofs (33 total), housed in special blue album, final issue #12 is lacking; attractive group, likely at least 8+ ozt ASW	EST	500-750	B
294	The Longines Symphonette Society sterling silver medallions, produced by Wittnauer Mint in 1970s, (18) medals in a frame from America's Natural Legacy series (wildlife); all w/ papers, not a complete set, no dup, incl Bald Eagle, Atlantic Green Turtle, Alligator, Tule Elk, Coyote & more. Attractive designs w/ antique finish, each weighs abt 1.1oz of sterling so ASW abt 18 oz	EST	1,400-1,600	L
295	Franklin Mint "History of the American Revolution" first edition solid sterling silver proof set in original brown folder, with booklet; complete set of (50) 32mm medals for historical events from 1761-1783, only 6,246 sets produced in 1970-71, set contains 20 ozt ASW; some wear to inner folder and some aging to silver	EST	1,500-1,750	B
296	The Longines Symphonette Society sterling silver medallions, produced by Wittnauer Mint in 1970s, (50) medals in (3) framed holders, from series Great American Triumphs; most w/ papers (the full set has 60 medals), topics incl Betsy Ross, Iwo Jima, Babe Ruth, Gettysburg, Macon & Akron, Mark Twain, etc.; attractive designs w/ antique finish, each weighs abt 1.1oz of sterling so ASW abt 50.8 oz	EST	4,000-5,000	L
297	(208) Franklin Mint Sterling Silver "Postmasters of America" Commemorative Medals on First day Covers. Many dup. These commemorative products were issued throughout the 1970s. Each medal is approx 25g. Total ASW approx.154 ozt	EST	11,500-12,000	L
<b>MISCELLANEOUS</b>				
<b>Exonomia</b>				
298	(15) "Never Go Broke" penny Tokens/Key Chain medallions. A variety of penny dates/mints and accompanying advertisers. Being offered at a significant discount to current online prices.	EST	30-50	BAG
299	(55) Replicas of Lincoln and Indian pennies all marked "COPY" & not intended to deceive prospective buyers. Includes key and semi-key dates: 1856 FE, 1877 Indian, 1909-S VDB, 1909-S, 1910-S, 1911-S, 1912-S, 1913-S, 1914-D, 1915-S, 1922-plain, 1931-S, 1955-D & more.	EST	50-100	SE

LOT	MISCELLANEOUS	VALUE	
300	Collection of Postal Numismatic Covers by the "99 Company"; incl (17) FDCs for various 1967 Tongan surcharged stamps, each with a 2s bronze coin (KM# 5), but one w/ 1p (KM# 11); also (3) from Samoa w/ 2s coins and high value bird stamps; finally one w/ Winston Churchill US stamp & GB crown coin, signed by postmaster, the first PNC cover made by 99 Co, with the first day of the coin, not the stamp; and 1968 cover w/ silver medal for 200th anniv of San Diego, produced by the US Mint; gen VF	EST 140-180	L
301	(150+) Replicas of US Large Cents 1793 // 1857 all marked "COPY" & not intended to deceive prospective buyers. Also included is a group of private/territorial gold COPY coins including Pan-PAC \$50 and a Brasher Doubloon.	EST 150-200	B
302	(275+) Replica US coins. Types noted include but are not limited to Early dollars, Trade and Morgan dollars, gold, 3 cent nickels, and commemorative halves. All marked "copy" and not intended to deceive prospective buyers.	EST 250-300	B
<b>Error Coins</b>			
303	(53) Error and counter stamped coins. Mostly blank and clipped penny planchets but also incl several clipped silver dimes and quarters.	EST 35-55	B
<b>U.S. CURRENCY</b>			
<b>Obsolete Currency</b>			
304	(2) 1833 \$10 Bank of Lewistown (PA) obsolete notes. G/VG.	EST 120-160	SE
<b>CSA Currency</b>			
305	(6) 1864 \$20 CSA notes CS-67. All F or better	EST 150-180	SE
306	NORTH CAROLINA Civil War notes (10) different, gen F to VF w/ only minor faults; 5¢ Krause #25; 10¢ #26; 25¢ #12A; 50¢ #9, #13, and #38 plate C; \$1 #2 Oct 21, plate B and #30 plate M; \$2 #4A plain back, C, and #31 plate A; overall better than typical conditions	EST 500-750	LE
<b>U.S. Large Size Currency</b>			
307	1923 \$1 Silver Certificate F-238 VG/F	EST 40-50	SE
308	(5) Large Size Silver Certificates incl \$1 1899 (F-233), (3) \$1 1923 (F-237) & \$1 1923 (F-238). Bonus: 1914 \$5 FRN (F-855A). All G.	EST 175-250	SE
<b>U.S. Small Size Currency</b>			
309	1929 \$100 FRBN (Clev) F-1890D VG a nice note w/ no issues other than wear.	EST 125-150	SE
310	\$1 "Star" * FRN 1999 (F-1924-E*) Sheet of (16)	EST 50-60	HWC-TUBE
311	\$1 FRN 2001-I Minneapolis (F-1926-I) Sheet of (32) rolled and housed in tube.	EST 50-55	HWC-TUBE
312	\$1 FRN incl 2003A (F-1931-G) Sheet of (16) and 2009 (F-3000-A) Sheet of (16) rolled and housed in tube. FV=\$32.	EST 55-60	HWC-TUBE
313	(4) Emergency and N. Africa notes incl (2) \$1 1935-A (F-2300) notes (G) and (2) \$1 1935-A (F-2306) notes (G&VG)	EST 100-115	SE
314	(6) \$1 "Funny Back" Silver Certificates incl (5) 1928-A (F-1601) and (1) 1928-B (F-1602). G-VG.	EST 90-120	SE
315	(75) \$1 Silver Certificates 1935x & 1957x. G to a few AU. Many in better condition.	EST 110-150	SE
316	(25) \$2 Red Seals 1928 to 1963. Condition varies but most VG to VF.	EST 80-100	SE
317	(35) \$2 series 1976 FRN stamped April 13, 1976 FDOI with various 13 cent stamps and PA post marks incl Philadelphia, Media, Chester, Willow Grove, Sayre, Avondale, Chadds Ford, Penns Grove, Cherry Tree, Gloucester City (NJ), Woodbury (NJ), Newark (DE), Pomona (NY). Bonus: (4) \$2 Series 2003A FRN privately "colorized" to honor the state of Maryland. All notes crisp Unc. FV= \$78.	EST 85-145	SE
318	(18) \$5 Red Seals 1963, most VG.	EST 125-150	SE
319	(30) Legal Tender and Silver Certificates incl 1928G // 1963A \$2 (13), 1976 \$2 (10), 1935C-E \$1 (3) and 1957 \$1 (3). Mostly nice circulated but several CU. Please review.	EST 125-150	SE
320	(4) Higher Denomination Silver Certificates incl (2) \$5 1953 (F-1655), \$10 1934-A (F-1702) & \$10 1953-A (F-1707). VG.	EST 90-120	SE
<b>U.S. Small National Currency</b>			
321	(2) Diff Small 1929 National Currency incl \$5 First Camden National Bank and Trust Type - 1 (F/VF) and \$10 The Second National Bank of Philadelphia Type - 2 (VF+). Both with nice eye appeal!	EST 150-200	SE
322	(3) 1929 FNB of Huntingdon (PA) Ch# 31 incl \$5 F-1800-2 AU, \$10 F-1801-1 F & \$10 F-1801-1 AU/CU.	EST 240-300	SE
323	(4) 1929 Union National Bank and Trust Company of Huntingdon (PA) Ch# 4965 incl. \$10 F-1801-1 VG, \$20 F-1802-1 AU/CU, & (2) \$20 F-1802-2 EF/AU.	EST 350-500	SE
<b>U.S. Mixed Currency</b>			
324	Balance lot of small size currency mostly 1976 Series \$2 (1 Star note) with a heavily circulated Series 1953A \$2 Red seal, a Series 1935G \$1 Blue seal, \$20 Series 1928C & \$20 Series 1934. FV=\$83	EST 85-100	LE
325	Collection of Small Size Currency incl (10) \$1 Blue Seals Series 1935C, 1935F, 1957 & 1957A, (1) \$5 Blue Seal Series 1934D, (9) \$2 Red Seals Series 1953, 1953A, 1953C, 1963, & 1963A, (2) \$2 Series 1978 FDOI stamped, (6) \$2 Series 1978 and (1) \$2 Series 2003 Uncut sheet of (4). FV approx \$57. Condition varies from circulated VG8 to several Unc.	EST 115-150	B

LOT	U.S. ACCUMULATIONS	EST	VALUE	
<b>U.S. Accumulations</b>				
326	Balance Lot (10) Whitman albums and folders, (12) empty OGP and commercial packaging for modern commemorative coins including large cherry wood presentation case, (8) misc and commercially prepared coin sets with FV= \$9.28, (2) 1972 unc mint sets & a 1973 proof set.	EST	35-40	L
327	Accumulation (1000+) Jefferson Nickels and Lincoln Pennies IDd and housed in flips, 2X2s & Whitman folders. Most coins prior to 1960. Mixed grades from G to Unc. FV approx \$37.75.	EST	50-100	L
328	Balance Lot mostly Unc US coins in 2x2s incl pennies(650+) 1959//1986, nickels (200+) 1938//1979 and dimes (49) 1965//1976.	EST	60-100	L
329	Balance Lot Early to Mid 20th Century US coins incl mostly Wheat pennies & Jefferson nickels in several Whitman albums and folders. Also noted Indian pennies, Buffalo, Liberty, and silver war nickels, RSVLT dimes, Kennedy halves, Ike and SBA dollars. FV approx \$47.	EST	60-100	B
330	(700+) Accumulation US coins incl Large, Indian & Lincoln pennies, 2-cent pieces, Liberty, Buffalo & Jeff nickels, RSVLT dimes, Wash quarters, Kennedy halves, SBA, Sac & Presidential dollars. FV approx \$39. No silver coins. The majority of these coins, however, are Unc or Proof. Worth inspection!!!	EST	60-150	L
331	(325+) Collection of coins in Littleton CC plastic envelopes and tubes incl Presidential, SBA, Ike, Sac & Innovation dollars, Washington quarters, Kennedy halves, RSVLT dimes, Liberty, Buffalo & Jefferson nickels, Indian cents & Lincoln pennies. No silver. FV approx \$64. Almost all of these coins are Unc or Proof.	EST	75-125	B
332	Accumulation (10) commercially packaged coin sets containing approx (36) Presidential dollars and (2) attractive leather folders for storage, (25) circ SBA dollars, approx (72) Unc State quarters and several sets containing gold-plated bronze replica (marked copy) Gold Proof coins from the 1700s to 1900s. FV approx \$79.	EST	80-100	L
333	(200+) Accumulation IDed and housed in 2x2s incl Indian (40) and Lincoln (80) pennies & Liberty (10), Buffalo (35) & Jefferson (40) nickels. Condition AG-Unc. Almost all coins pre-1965. Bonus: 10+ other variety coins added to sweeten the lot.	EST	100-150	B
334	(13) Small silver coin accumulation incl 1850 Seated dime, (5) Mercury dimes 1917-S, 1939, 1939-S, 1943, & 1944, (4) RSVLT dimes 1955, 1955-S, 1958, & 2001-S, Standing quarter 1927, Walking Liberty half 1939 & 1964 Kennedy half. ASW approx 1.62 ozt.	EST	125-150	SE
335	(68) Accumulation of dollars and half dollars incl (13) Eisenhower dollars, (23) Presidential dollars, and (32) Kennedy halves (1964 // 1985-D). All housed in Whitman folders. Condition AU/Unc. There are several dup. ASW approx 1.45 ozt.	EST	150-170	BAG
336	Accumulation various US sets in frames incl dollars (Morgan, Peace, Ike, SBA), Barber types(half, quarter & dime), \$1 Blue seal and \$5 Red seal. Inspect!	EST	150-200	BAG
337	(8) Presidential commercial and OGP coin sets incl. (2) 2016 Ronald Reagan Coin and Chronicles sets (one in OGP, the other in commercial cherry wood presentation case), (4) 2008 Presidential \$1 Proof sets in OGP, the Danbury Mint Complete Bicentennial Mint Mark set in a commercial cherry wood case honoring GW, JFK and DDE, and the Danbury Mint Mt. Rushmore 75th Anniversary Coin set in a cherry wood case honoring GW, TJ, TR, and AL. The collection is an assortment of ASEs, Presidential \$1 Proof and Reverse Proof coins, Presidential medals, & Bicentennial clad Unc and Proof Q, Halves, and Ikes. FV approx \$28.75. Silver = (2) ASEs and (1) Ike. ASW approx 2.31 ozt. Bonus: (2) complete Presidential token sets from (1) Sunoco Oil Co and (1) Reader's Digest.	EST	175-225	L
338	(15) Commercially packaged coin sets containing a variety of US coins including pennies, dimes, nickels, quarters, halves & dollars. Clad FV approx \$10. Silver FV approx \$4.30.	EST	180-200	B
339	Balance Lot US coins incl (4) Large cents (consignor IDed as 1801, 1802, 1817, 1853), (400+) Lincoln pennies stored in Whitman folders #9004, 9030, 9033, (3) Indian pennies (1881, 1904, 1905), 1851 silver 3-cent, 1866 3-cent nickel, (11) Buffalo nickels, (11) War Time Jefferson nickels, 1853 & 1856 seated half-dime, and 1892 Barber dime.	EST	240-350	B
340	(19) Commercially packaged coin sets containing a variety of US coins including Ike & Presidential dollars, Kennedy halves (Proof set in Capital holder 1964 & S-Mint 1968, 1969, 1970 & 1976), Buffalo nickels, Indian & Lincoln pennies. Also incl (2) Tribute 1936 US Proof Sets from National Collector's Mint. The Half Dollar, Quarter, Dime, and Nickel are struck in 0.999 fine silver and the cent is struck in pure copper. The coins are stamped "COPY" and are not legal tender, but made specifically as a tribute proof set for collectors. These are from a limited series with only 1,009 sets made. Clad FV approx \$55.09. ASW approx 2.75 ozt.	EST	250-275	L
341	(19) Commercially packaged coin sets containing a variety of US coins including Large cents, Indian pennies, 2-cent pieces, 3-cent nickels, Liberty, Buffalo and Jeff nickels, Mercury dimes, Standing Liberty & Wash quarters, Barber, Walking, Franklin & Kennedy halves, Blue seal, Red Seal & FR notes. Clad and currency FV approx \$40. Silver FV approx \$4 (90%). ASW approx. 2.9 ozt. Numismatic value beyond FVs significant but TBD by you - worth inspection!	EST	250-450	L
342	Estate Accumulation (425+) post-1970 clad coins including Jeff nickels, RSVLT dimes, State Q, Kennedy halves, SAC dollars & SBA dollars. Individually housed in 2x2s. Most Kennedy are circulated but approx (19) Proofs were noted. Most other coins are AU/Unc. FV approx. \$262.	EST	260-320	L

LOT	U.S. ACCUMULATIONS	VALUE	
343	(17) Commercially packaged coin sets containing a variety of US coins incl but not limited to Morgan, Peace, SBA & Ike dollars, Barber, Walking, Kennedy and Columbian halves, Barber, Standing & Washington quarters, Barber and Mercury dimes, Liberty & Buffalo nickels, Indian cents. Clad FV approx \$6.33. Silver FV approx \$2.00 (40%) and \$7.40 (90%). ASW approx 6.0858ozt.	EST	350-400 B
344	(15) Commercially packaged coin sets containing a variety of US coins including pennies, dimes, nickels, quarters, halves & dollars. Clad FV approx \$5.11. Silver FV approx \$0.50 (40%) and \$8.10 (90%).	EST	400-450 L
345	(17) Commercially packaged coin sets containing a variety of US coins including pennies, dimes, nickels, quarters, halves, and dollars. Clad FV approx \$2.43. Silver FV approx \$1.50(40%) and \$10.80(90%). Worth inspection!	EST	450-500 B
346	(6) Incomplete Type Collections of 20th Century US coins. Collections include Indian & Lincoln pennies, Liberty, Buffalo & Jefferson nickels, Barber, Mercury & RSVLT dimes, Washington Quarters, Barber, Walking, Franklin & Kennedy halves, Ike and SBA dollars. Housed in Whitman folders. Clad FV=approx \$9.69. Silver FV approx \$12.85. Early dates with typical circ condition but many later dates better grades including Uncs.	EST	600-700 B
347	Accumulation silver coins mostly Mercury dimes but also incl Walking & Franklin halves and Washington quarters. Most coins G-VG but several later date dimes EF-Unc. FV approx \$11.80. ASW=8.536 ozt.	EST	625-750 LE
<b>U.S. Coin Rolls Accumulation</b>			
348	Collection of Rolls including \$25 each of 2005-D & 2006-D Jefferson nickels in attractive private issue packaging, (3) rolls of Unc 1974-S pennies, and (5) rolls of circulated pennies from 1940s thru 1970s. FV approx \$54.	EST	75-90 B
<b>U.S. &amp; Foreign Coin Accumulations</b>			
349	Mystery box w/ variety of items; cloth bag weighing 14lbs containing Unc 1964 British ha'pennies; US Mint medal honoring Canadian ambassador in Iran Kenneth Taylor; baggie of loose medals, tokens and other miscellany; (4) pages holding 2x2s or loose, more US, WW, tokens and stuff; baggie of copper axe money (Central America, genuine?); tattered German cigarette card album, well-filled w/ cards showing WW coins, fancy printing in color (copper, silver, gold); more; noted at least one silver Peso, worn to Unc	EST	100-140 L
350	Better Mystery box with silver; several US Mint and private commercial packaged sets, incl Kennedy Half 50th anniv, State Quarters & Euro sets, 2018 Parks quarters, proof sets w/o envelopes, Marshall Islands commems, a few tokens / medals; worn US 3¢; some general foreign plus some better: 2005 silver proof GB pound; 1932 Swiss 10c XF; 1881 German mark; 1819 Caracas 2r; roll of 2012 Canada penny (last year), more; variety worn to Proof.	EST	300-400 B
<b>WORLDWIDE COINS</b>			
<b>British Coins</b>			
351	Great Britain (4) Classic silver coins: Henry III c.1220 short cross penny; Charles I shilling ND, clipped; Charles II 6d ND (1660) KM#404; George III 1820 shilling, cleaned; each in 2x2 in typical conditions.	EST	200-250 SE
<b>Canada Coins</b>			
352	(90) Nickels 1922 // 1968 most from the 1920s-40s. IDed and housed in 2x2s. Circulated with a few AU/ Unc in later dates.	EST	45-60 B
353	(16) \$1 incl Silver 1958, 1957 (2), 1965 (5) (Type I-V) 1967 and clad 1968 (2) // 1973. ASW approx 6.75 ozt.	EST	550-600 SE
354	(46) Unc Mint sets 1972 // 1987. (3) for each year except 1986 and 1987 that have only (2). In OGP.	EST	100-150 B
355	(16) Proof sets 1973 // 1987. (2) sets for 1987. ASW approx. 6 ozt. In OGP.	EST	500-600 L
356	(3) Proof Commemorative \$1 coins incl. 1982 "Constitution" and (2) 1984 " Jacques Cartier" Cameo Proof. In OGP.	EST	60-70 B
<b>Europe Coins</b>			
357	Germany Selection (68) NOTGELD and other local coins; mostly base metal but a few aluminum and brass, a few are square; noted Trier, Westfalen, Duren, Bingen, Sterkrade and others, one is French; some toning / aging as typical, F-VF	EST	150-200 B
<b>Foreign Silver Coins</b>			
358	Bahamas 1993 \$10 Expulsion of Pirates large sterling silver proof in original packaging w/ paper; ASW 4.0469 ozt. only (2000) produced by Valcambi, Switzerland (KM# 162)	EST	350-400 B
359	Bahamas Selection (6) diff sterling silver commemoratives; 1990 \$10 Columbus; 1993 \$5 Pirates Davis, Vane & Teach; 1994 \$5 Ponce de Leon; 1994 \$2 Royal Visit; all but Columbus in original packaging w/ papers; ASW 4.6993 ozt. (KM# 133, 158, 159-61, 173)	EST	400-450 B
360	Belize (2) Proofs: 1990 \$2 Queen Mother & Cayman Islands 1987 \$5 QEII Ruby Wedding, both sterling silver proofs in original packaging w/ papers; ASW 1.682 ozt.	EST	140-160 B
361	Canada 1977 Four Governors General Medallions 2-piece set incl. 48.6g 45 mm Sterling Silver (ASW approx. 1.44 ozt) medal and 42g 45mm Cu/Ni medal. In OGP with COA.	EST	110-125 SE
362	Canada 1988 Olympics Set of (10) proof \$20 coins w/ original RCM packaging. ASW 10 ozt.	EST	550-650 L
363	Canada Complete boxed set of (10) sterling silver \$20 coins for the 1988 Calgary Winter Olympics, each showing a different sport and containing 1 troy ounce each; in original green fuzzy box w/ RCM logo token and papers.	EST	900-1,000 L

LOT	WORLDWIDE COINS	EST	VALUE	
364	Canada 1993 \$1 Stanley Cup commem sterling silver, proof & Unc, both in original packaging, 1.4974 oz ASW (KM# 235)	EST	125-150	B
365	Canada (3) Silver Dollars incl (2) 1971 and (1) 1972 in OGP. ASW approx 1.125 ozt.	EST	130-150	SE
366	Canada (42) Proof Silver \$1 1971 // 1980. Minimum (3) up to (6) per year. Each coin .375 oz, total ASW approx 15.75 ozt. In OGP	EST	1,250-1,500	B
367	Canada Deluxe set of (28) \$5 & \$10 silver commems for the 1976 Montreal Summer Olympics, Series I-VII, each in plastic round in sliding drawers in original wooden box, plus papers; 30.352 oz ASW	EST	2,500-3,000	B
368	Canada (29) Silver Proof \$1 1981 // 1987. (4) for each year except (5) for 1981. (2) 1987 are Cameo proofs. Each coin ASW .375 ozt. Total ASW approx 10.87 ozt. In OGP.	EST	850-1,000	B
369	Canada (6) RCM silver coins incl 2011 \$10 (1/2 oz) Maple Leaf Forever (4), 2012 \$10 (1/2 oz) RMS Titanic & 2012 \$20 (1 oz) Queen's Diamond Jubilee. All in OGP. ASW approx 3.5 ozt.	EST	300-325	B
370	Canada (127) Pre-1967 Canada Silver coins (80%) incl (49) quarters and (78) dimes in avg circ. ASW= 12.0221 ozt	EST	720-750	BAG
371	Channel Islands (4) sterling silver proof commems; Alderney 1994 £2 piedfort D-Day (P5) & 1995 £5 piedfort Queen Mother (P7), both in plastic rounds; Guernsey 1987 £2 William the Conqueror; Jersey 1990 £2 Battle of Britain; these two in original Royal Mint packaging w/ papers; ASW 5.0311 ozt.	EST	400-500	B
372	Falkland Islands 1985 £25 sterling silver proof 100 Years of Self-Sufficiency, 65mm and 150 grams, in original Royal Mint packaging w/ paper, ASW 4.4609 ozt. (KM# 20)	EST	375-425	B
373	Germany (5) silver coins in 2x2: German Empire 1/2m 1916-D; 1m 1914-A; both Unc; Prussia 2m 1905-A XF; 3m 1909-A AU; 5m 1914-A XF-AU; Attractive group.	EST	250-350	SE
374	Great Britain Boxed set first (6) "round pound" designs in sterling silver, #0103 of only (1000) such sets produced by Royal Mint; ASW 1.695 ozt.	EST	150-200	B
375	Great Britain 1989 Piedfort 2-coin sterling silver set £2 Bill of Rights & £2 Claim of Right (KM# P10-11); in original packaging w/ paper.	EST	170-200	B
376	Great Britain 1992 special 6-coin sterling silver Piedfort set in display box w/ papers; incl new size 5p 1990 & 10p 1992, a 20p 1982, 50p 1992 Council of Ministers, £1 1988 and £2 Claim of Right; numbered 428/500. Proof.	EST	500-600	B
377	Great Britain 1997 Silver Proof Britannia Collection in green box w/ paper, tenth, quarter, half and full ounce silver coins, a bit of natural toning on quarter oz. (KM# PS103)	EST	200-250	B
378	Great Britain 1997 Family Silver Collection, 5-coin set 50p, £1, £2, £5 and 1-ounce Britannia in deluxe red holder w/ paper.	EST	300-400	B
379	Great Britain Royal Mint "A Celebration of London" coin set containing (18) £5 Sterling Silver Proof commemorative coins from 2009-10 in celebration of the 2012 London Olympics. Coins housed in OGP with COAs. Presentation case shows signs of wear. ASW approx. 15 ozt.	EST	1,100-1,500	L
380	Great Britain Selection (9) diff sterling silver Piedfort proof "round pounds" in Royal Mint packaging; 1983-85, 1987-89, 1993-95; ASW abt 5.085 ozt.; bonus RM platinum-plated ingot	EST	400-500	B
381	Great Britain Selection (5) diff 1990s silver proofs; 1990 £5 Queen Mother; 1993 £5 40th anniv Coronation; 1995 £2 WWII; 1996 £5 QEII 70th birthday; 1997 £5 QEII 50th Wedding anniv; each in original packaging, all but 1997 w/ papers; ASW 3.8392 ozt.	EST	350-400	B
382	Great Britain (4) 1990s Piedfort commem sterling silver proofs in original packaging; 1992 10p; 1992 50p Council of Ministers (lacks papers); 1994 50p D-Day and 1994 £2 Bank of England; (P13, P15, P17, P19)	EST	300-400	B
383	Great Britain (3) Royal Mint Sterling Silver commemorative proof coins incl. 2009 £1 (9.5g) "Shield of the Royal Arms", 2009 £5 (28.28g) "Henry VIII" and 2008 £5 (56.56g) "Prince of Wales". Each coin has very low mintage. Housed in OGP with COA. ASW approx. 2.8 ozt.	EST	350-450	B
384	Great Britain Stash of (60) silver circulating coins; 1 1/2d 1838; 3d (18) 1899-1944 (incl 1902 XF); 4d 1839 necklace hole; 6d (6) 1868-1939; shilling (21) 1873-1945; florin (3) 1852, 1856, 1923; 2sh (3) 1942 (2) & 1945; half crown (6) 1936-46; crown 1891 F+; conditions from very worn to XF, mostly F, only couple duplicated years; 6.8785 ozt ASW	EST	600-700	B
385	Marshall Islands (8) 3-coin sets 1992-95 in blue fuzzy holders w/ papers; each w/ \$5 CuNi, \$10 brass and \$50 .999 silver proof commem; topics WWII Heroes of North Atlantic, Battle of the Bulge, Corregidor, Guadalcanal, Midway and Victory in Europe; others Heroes of Vietnam War and Legends of Discovery (ships); ASW 7.9912 ozt.	EST	650-800	B
386	Panama 1931 large 1 balboa, ASW .7734 ozt. only (200,000) minted, XF (KM# 13)	EST	100-120	SE
387	Panama Selection (7) silver circ coins: 10c 1947, 1953; 25c 1947 (3); 50c 1953 and 1b 1947; ASW 1.8221 ozt. gen VF to XF w/ some typical aging	EST	150-200	SE
388	Russia USSR Boxed set honoring Yuri Gagarin, the first man in space; 3 ruble .900 silver one ounce commemorative (Y# 262) along with a Gagarin medal made from metal that was flown in space, only (160,000) medals produced in the waning months of the USSR's existence; incl bilingual papers for both coin & medal; Proof, in dark red fuzzy box.	EST	140-180	B
389	Sao Tome e Principe 1990 3500 dobras Sea Turtle large sterling silver commemorative, 4.0469 oz ASW; only (750) produced! (KM#46)	EST	350-400	SE

LOT	WORLDWIDE COINS	EST	VALUE	
390	Solomon Islands (3) 1991-92 \$1 sterling silver proofs in original packaging w/ papers, WWII themes Pearl Harbor, Coral Sea & Guadalcanal; ASW 2.523 oz.	EST	200-250	B
391	Solomon Islands (2) 1 oz Silver (.9999) \$2 coins with color from the Giants of the Galapagos Islands Collection incl 2020 Seahorse and 2021 Whale shark. Mintage limited to (2500) for each, in original packaging.	EST	200-300	BAG
392	South Atlantic (3) diff sterling silver proofs: Falklands 1992 50p piedfort QEII 40th anniv (P2), only (750) minted; St. Helena & Ascension 1984 £1 Sooty terns piedfort (P1) only (2500) minted; Tristan da Cunha 1987 50p QEII 40th Wedding anniv (#7) only (2000) minted; Falklands in plastic round, others in original packaging w/ papers; ASW 3.088 oz.	EST	250-300	B
393	Zambia (4) diff 1993-94 proof 250 kwacha 63mm sterling silver Birds series (from a set of 8); each in plastic round, African Fish Eagle, Saddle-billed Stork, Red-breasted Swallow & Lizard Buzzard; 4.0469 oz ASW each! only (5,000) minted each (KM# 34-35, 37, 173)	EST	1,300-1,500	B
394	Group of numismatic covers: (6) 99 Company small covers w/ Canada 1971 \$1 British Columbia; Czechoslovakia 1971 50kr Hviezdoslav; Israel 1971 £10 Let My People Go, 1972 £5 Hanukka & £10 Pidyon HaBen, 1973 £10 25th anniv; Fleetwood folder w/ New Sweden 1988 combo FDC w/ 1938 Swedish 2kr coin; total ASW 3.7926 oz; BONUS (6) more numismatic covers w/ non-silver incl 1981 Royal Wedding crown (2 diff packaging), Queen Mother, GB Millennium, Germany.	EST	300-350	B
395	Boxed set of (8) sterling silver piedfort collection produced by the Royal Mint 1983-84; FAO World Fisheries topic, each coin from different country Cape Verde, Ghana, Liberia, Mozambique, St. Thomas & Prince, Seychelles, Somalia and Uruguay; no more than (500) sets were made; 382.12 grams of sterling is abt 11.36 oz ASW	EST	900-1,000	B
<b>Foreign Gold Coins</b>				
396	Canada 1986 Proof \$100 Gold in original Mint packaging. AGW .5 oz.	EST	2,200-2,400	BAG
397	Mexico 1986 World Cup boxed set of (7) commemoratives, two each 25 pesos, 50p & 100p, each sterling silver, plus 250 peso .900 fine gold; proof coins dated 1985, each w/ paper, ASW 3.4414 oz & and AGW .250 oz	EST	1,500-1,600	L
<b>Foreign Coin Accumulations</b>				
398	Baggie filled w/ 17 lbs. WW coin mixture, mostly 20th century obsolete; much Europe and Latin America (no Canada, GB, East Asia); no silver, some 19th century, good variety, worn to UNC	EST	150-200	B
399	Baggie filled w/ 16 lbs. WW coin mixture, mostly 20th century obsolete; much Europe and Latin America (no Canada, GB, East Asia); no silver, some 19th century, good variety, worn to UNC	EST	150-200	B
400	Small accum WW coins; incl (5) plastic trays full of 2x2s, good variety of mostly common WW coins 1890s-1970s, noted (4) large Newfoundland cents, Lower Canada sou, few China cash, GB, Italy, Hungary, France, Australia, Canada, India and others; also a few tokens, wooden nickels, set of final European coins before euro, FV Canada in tubes, more; very little silver (two Swiss ½fr), worn to Unc	EST	150-200	B
401	Large accum from retiring dealer, many many (100s) in 2x2s, flips, envelopes, loose in baggies; small box w/ all Mexico in 2x2s, red box of 2x2s, balance in several baggies, not exactly sorted; spot checked and found ancients (abt 15 incl small thick rounds), Ottoman Empire, modern Canada, 18th-19th cent coppers (France, Russia, others), Italy, Germany and many others; non-coin items incl wooden nickels & transport tokens, a few medals, small metal box of fakes (incl China); a real grab bag, did note some silver but not much; worn to UNC.	EST	400-500	B
<b>WORLDWIDE CURRENCY</b>				
<b>Foreign Currency</b>				
402	Bahamas Selection incl Bahamas Government 50¢ Unc, \$1 XF and \$3 VF (P# 17a, 18a, 19a); Monetary Authority 50¢ crisp, \$1 XF (#26, 27a); Central Bank \$1 #35a VF & XF, #43a (2) crisp, #50 Columbus crisp; \$3 #44 crisp; \$5 #37a VF; approx Krause 2018 CV \$493.	EST	200-250	LE
403	Caribbean banknote selection (64), incl several desirable crisp notes; Barbados (12) incl (6) crisp \$1 #29a, (2) \$2 crisp #36 and \$20 VF #39; Bermuda \$1 XF and \$2 crisp #34a; Cayman (4) \$1 one is crisp #5e; East Caribbean Authority \$1 (8 incl 5 crisp) w/ varieties & EC Central Bank \$1 (20 many crisp) and \$5 (3) VF; Jamaica (9) from \$1 to \$50; Trinidad & Tobago \$1 (4) crisp and VF \$1 & \$5; high Krause CV.	EST	250-350	B
404	Croatia (13) 1941 1000 kuna notes, eight diff letters at start of serial number, (2) diff pairs are in sequence; XF to Unc (P# 4a); issued by Nazi German puppet state.	EST	60-80	SE
405	Germany Group abt (168) of Inflation era local, private, larger-size high FV Notgeld, Occupation, railway or similar non-Federal paper money; some simple text, others elaborate designs; noted Darlehnskass Ost Kowno 1918 1,000 mark, 5 million Braunkohlenbergbau, 5 million Altona, 2 million Berlin, 500 mark East Prussia, 10,000m Koln, 5 million Tilsit, 5,000 Bavarian Notenbank; 50 billion mark Moringen Nov 1923, 5 million Rhein Steelworks and many others; most are worn to VF w/ a few UNC.	EST	300-400	LE
406	MILITARY Camp Notes; WWI 1 mark POW Camp I at Munster, Germany; POW Camp Boldogasszony, Austria-Hungary 1 krone 1916; WWII Germany POW camp money w/ red triangles, 1rm, 2rm and 10rm; Nazi Germany MPC for 10pf greenish paper; couple AVG, most somewhat worn, Austrian XF.	EST	100-140	SE

LOT	WORLDWIDE CURRENCY	EST	VALUE	
407	NOTGELD Non-German notes, incl France (21), Memel, Austria, Allenstein, Hungary (50), Halligen (in Frisian language) and Latvia 3 rubles 1919; several Hungarian notes have tape stains from past poor storage, others from F to XF	EST	100-140	SE
408	NOTGELD (230+) German small size Notgeld w/ a few larger (size & FV), several in sets, most in retail envelopes which ID them, also (2) diff packets of (6) w/ outer envelope; most appear Unc; great selection.	EST	140-180	B
409	NOTGELD Abt (480) from Austria; mostly small size heller notes IDed in retail envelopes, also some larger size w/ higher FV, other coupons; most appear Unc w/ the larger ones circulated.	EST	350-450	B
410	NOTGELD At least (1000) from Germany & Austria (60/40); unorganized accum, wide variety of towns & values, designs elaborate & colorful to just plain text; all are tiny to medium sized, some duplication, condition varies, some very worn or with small bits of tape from previous scrapbooking, others crisp UNC and everything in between; great stash ready for a new home	EST	400-500	L
411	Selection WW notes, unsorted variety, some better incl Cyprus £1 1989 (CV \$65 crisp), Russian Civil War, Austria, Sweden, Ireland, local UK banks (Ulster, Jersey, etc), South Africa, New Zealand, Fiji, Denmark, East Caribbean \$1 (#13d CV \$75) and more; expect some worn, good number are crisp Unc, approx (300).	EST	250-350	B

## NUMISMATIC REFERENCE & SUPPLIES

### Numismatic Reference

412	Small group literature from retired dealer: Krause World Coins 1601-1700 4th ed (2008); Charlton Catalogue of Canadian Coins 57th (2003) & 67th eds (2013); Official Mega Red Book 4th ed (2018) used; regular Red Book 2015; Guide Book of US Tokens & Medals by Whitman (2008); Major Variety & Oddity Guide of US Coins by Spadone (Krause 1967); most gently used, some minor cover wear from regular use.	EST	80-100	L
-----	--	-----	--------	---

### Numismatic Supplies

413	Accumulation of used coin storage containers including (6) medium size metal lock boxes(only one has a key), 10 large canvas coin bags, and (22) cardboard boxes for 2x2s, flips, and snaps. Plus a few extras thrown in.	EST	40-50	L
414	Accumulation of Vintage "National Coin Albums" incl (4) full size and (4) half-size albums containing pages plus an additional assortment of (20) full-size and half size pages. Mix and match albums & pages to fit your needs. Pages for silver dollars, commemorative and Franklin halves, wheats, nickels, dimes, Indians, quarters and large cents are some of the pages noted. Or just put the albums on your collecting shelf for an added vintage look to your den or office.	EST	50-60	L
415	(118) Accumulation of used Whitman folders incl a variety of nickel, dimes, quarter, halves, and dollar folders. Many duplicates.	EST	50-100	L
416	(10) Lot of various size Cherry Wood Presentation Cases. One case is faux wood. Use to display your coins or re-purpose as jewelry boxes, etc.	EST	50-100	L

## DESCRIPTIONS

AG	Almost Good	MS	Mint State
AGW	Actual Gold Weight	MS63	Choice Uncirculated
ANACS	American Numismatic Association Certification Service	MS65	Gem Uncirculated
ASW	Actual Silver Weight	NGC	Numismatic Guaranty Corp
AU	Almost Uncirculated	obv	Obverse
Avg	Average	OGH	PCGS Old Green Holder
BU	Brilliant Uncirculated	orig	Original
Ch	Choice	P	Photo
circ	Circulated	PCGS	Professional Coin Grading Service
curr	Currency	PF	Proof
diff	Different	PPQ	Premium Paper Quality
dup	Duplication	PR	Proof
env	Environmental	P/L	Proof Like
EF	Extra Fine	rev	Reverse
EPQ	Exceptional Paper Quality	scrs	Scratches
EST	Estimate Fair Value	UL	Upper Left
F	Fine	unc	Uncirculated
Fr	Fair	UR	Upper Right
FRN	Federal Reserve Note	VG	Very Good
G	Good	VF	Very Fine
LL	Lower Left	WP	Web Photo
LR	Lower Right	XF	Extra Fine

---

## EXPANDED DESCRIPTIONS

If you desire more information about any lot our staff would be happy to provide additional details & scans—as much as practical; just call (or write) at least 10 days or more before the sale.

## AUCTION RESULTS

To obtain Prices Realized visit our website at [www.dutchcountryauctions.com](http://www.dutchcountryauctions.com) and Click on *Current Auction* or for other information please call after 11 a.m. the Tuesday after the auction (302-478-8740).

## CONSIGNMENT DEADLINES

We are always looking for new consignments! We are currently accepting consignments for Coin & Currency Sale #48 August 13, 2026. The *approximate* closing date for consignments is May 27, 2026.

## AUCTION SCHEDULE

Auction	Date of Sale	Approx. Consignment Deadline
#364	May 12-14, 2026	Closed
Coin & Currency Sale #47	June 11, 2026	Closed
#365	July 14-16, 2026	Closed
Coin & Currency Sale #48	August 13, 2026	May 27, 2026